

Proudly made in
Canada
to Canadian
Standards



The Genesis II Series

Sectional Homes





The Genesis II Series

Standards and Specifications

Exterior

- ◆ Maintenance Free Vinyl Siding
- ◆ Fibreglass Shingles
- ◆ Nominal 2.25/12 roof pitch on 24' Wide, 2/12 on 27' Wide and 5/12 on 30' Wide
- ◆ R-33 Attic Insulation and ArmourGard Ice and Water Protector
- ◆ Coach Lights at all Exterior Doors
- ◆ 6-Panel Insulated Exterior Doors
- ◆ Low E & Argon Gas Thermal Pane PVC Windows with Screen and Safety Latch
- ◆ Residential 8' Walls
- ◆ 2x6 Exterior Walls @ 24" o.c. with 3 Belt Rails and R-22 Insulation
- ◆ 2x8 Floor Joists for 24' & 27' Wides, 2x10 for 30' Wides
- ◆ 19/32" OSB T&G Floor sheathing - Screwed and Glued
- ◆ R33 Floor Insulation
- ◆ Box Steel Frame with Detachable Hitch
- ◆ Exterior G.F.I. Receptacle with Waterproof Cover
- ◆ Frost Free Exterior Tap
- ◆ Heat Tape Receptacle

Interior

- ◆ Cathedral Ceiling in Living Room, Kitchen & Dining Area
- ◆ Textured Ceilings
- ◆ Flat-Panel White Interior Doors
- ◆ Carpet in LR, MBR, Hall & Family Room
- ◆ Linoleum All Other Areas
- ◆ Designer Light Package
- ◆ Designer Hardware Package
- ◆ 2" Blinds Throughout

Kitchen

- ◆ Rangehood with Two Speeds and Light, Vented to Exterior
- ◆ Stainless Steel Kitchen Sink
- ◆ Kitchen Single-Lever Faucet /w Sprayer
- ◆ Modular PVC Cabinets & Designer Hardware
- ◆ Bank of Drawers (4 drawers)
- ◆ Deep Cabinet over Refrigerator
- ◆ 18 Cu. Ft. 2- Door Frost Free Refrigerator
- ◆ 30" Easy Clean Electric Range
- ◆ 6" x 6" Tile Backsplash

Bathroom

- ◆ One Piece Tub and Shower w/ Single-Lever Faucet
- ◆ Dual Handle Vanity Faucets
- ◆ Designer Light Fixture over Vanity
- ◆ Curved Shower Rod /w Liner in Bathroom
- ◆ 4" x 4" Spa-white Tile Backsplash
- ◆ Exhaust Fan in Bathroom
- ◆ G.F.I. Protected Receptacle
- ◆ Privacy Locks on Bathroom Door

Utilities

- ◆ 40 Gallon (IMP) Electric Water Heater
- ◆ High-Efficiency A/C Ready Natural Gas Furnace with Electronic Ignition
- ◆ Smoke Detectors as per Code
- ◆ Plumbed and Wired for Washer and Dryer
- ◆ Built to CSA Z-240 Standard

Did you know?

SRI homes are built indoors, never exposed to the outdoor elements, and we continually inspect our homes to ensure our rigorous construction standards are met. We use quality, brand-name building materials, fixtures and appliances in every home we build.





The Genesis II Series

WHO IS SRI?



SRI Homes is a name synonymous with manufactured and modular home building, having its roots back to the 1960's. However, today's homes have little in common with those beginnings. The beauty of SRI's homes is that they offer the same decor choices and options of site built homes, but at a fraction of the cost. Not only cost savings, but time savings means your new SRI home is ready in weeks rather than months. Your SRI Retailer takes care of ordering, delivery, set up and any necessary after sales service. Wow, that was easy!

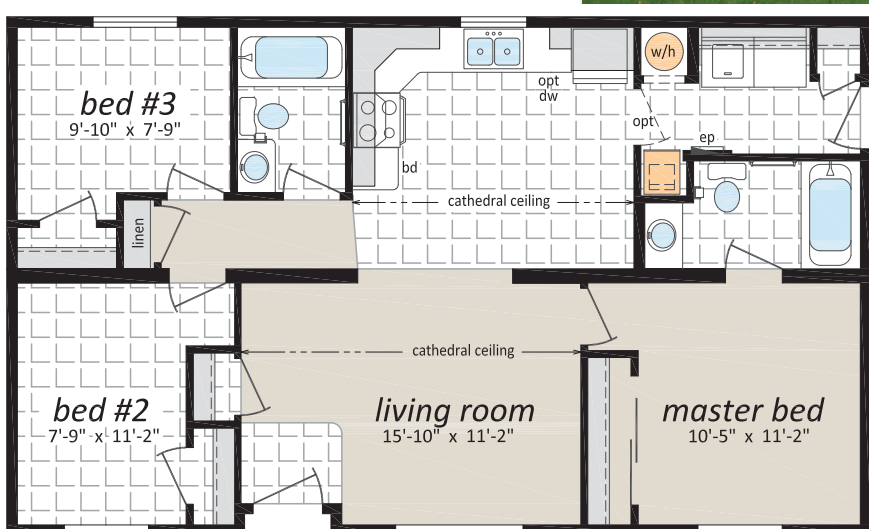


WHY GENESIS II?

The Genesis II series offers the advantages of a sectional home at a very affordable price. The large selection of floorplans provides choices; including homes for a narrow lot. This series of homes has been very popular since its inception in 1998 and today we are pleased to offer new and exciting floorplans. As you explore these homes, see how well suited they are for so many lifestyles!

the oregon

GDII-4400 • 24' x 40' • 960 sq. ft.

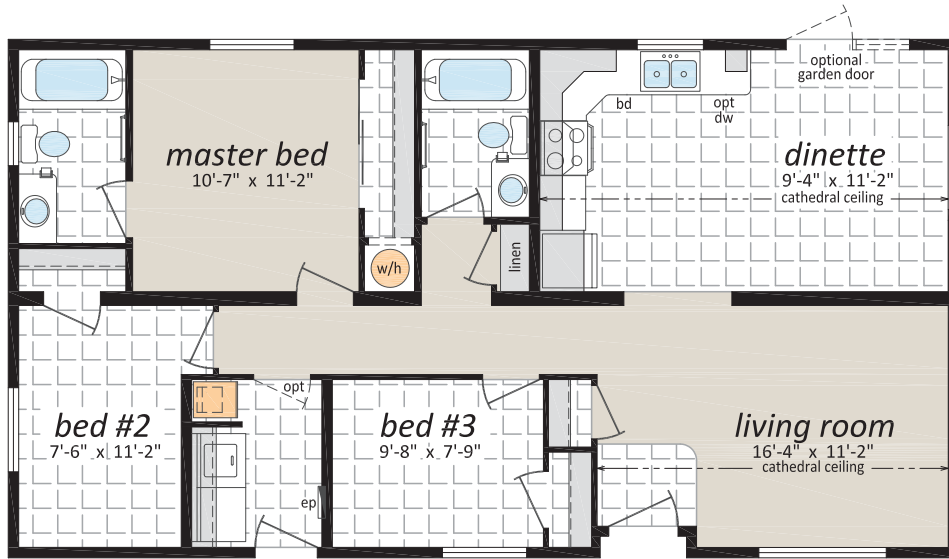




The Genesis II Series

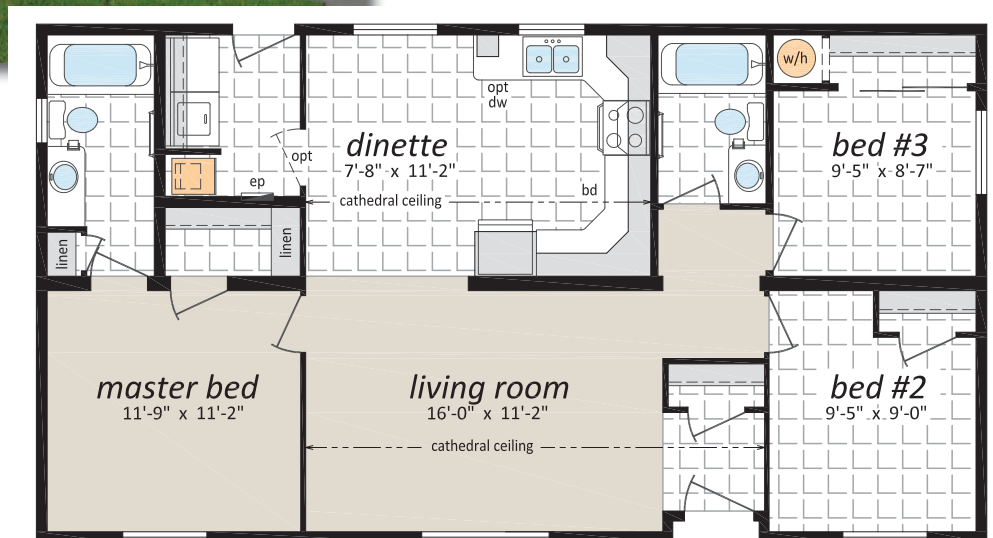
the nevada

GDII-4440 • 24' x 44' • 1,056 sq. ft.



the creston

GDII-4441 • 24' x 44' • 1,056 sq. ft.

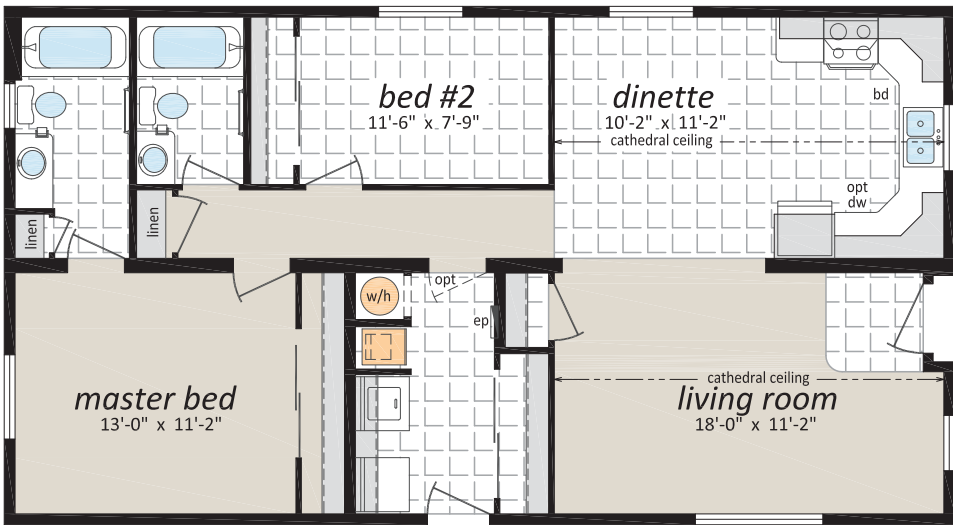




The Genesis II Series

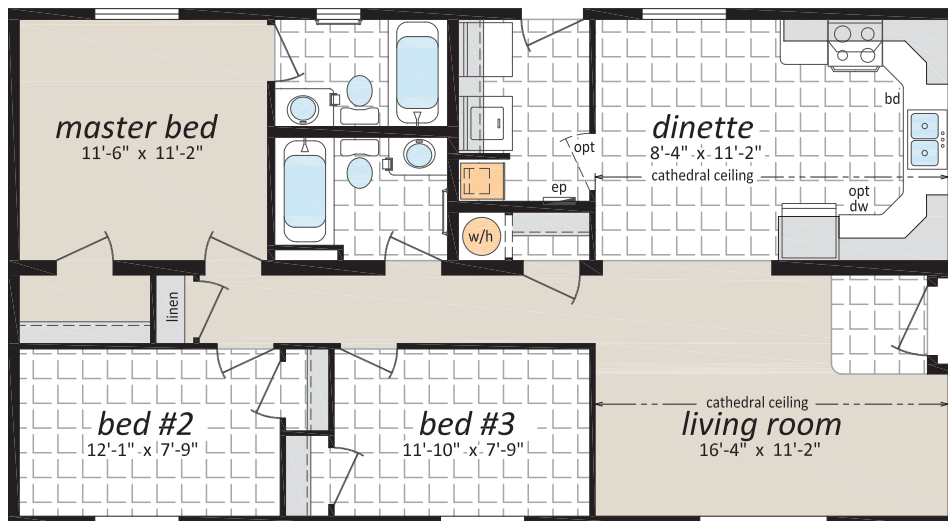
the montrose

GDII-4442 • 24' x 44' • 1,056 sq. ft.



the galloway

GDII-4443 • 24' x 44' • 1,056 sq. ft.

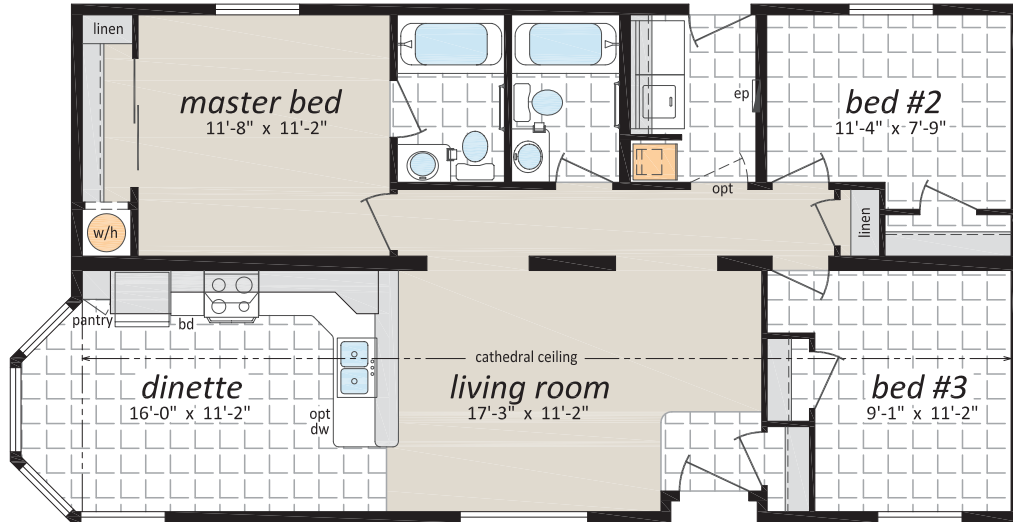




The Genesis II Series

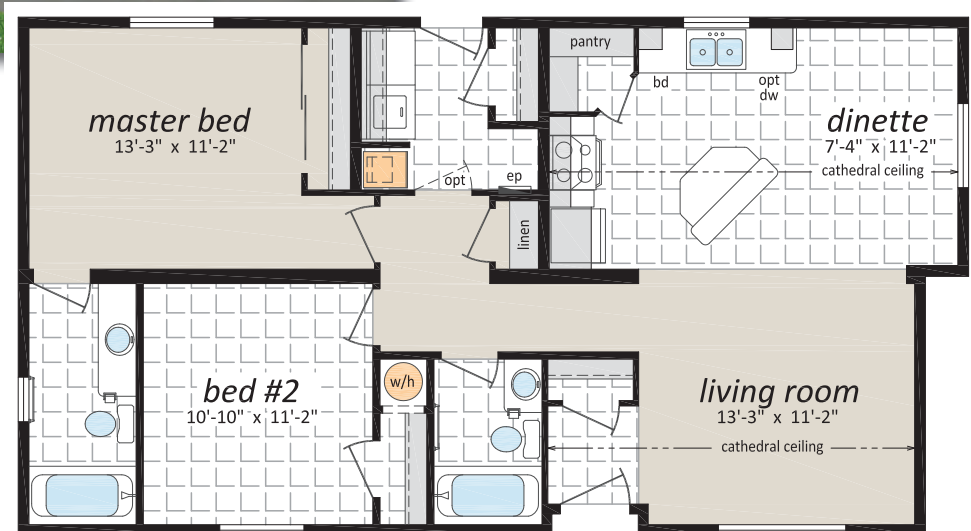
the riondel

GDII-4444 • 24' x 44'/46' • 1,080 sq. ft.



the darfield

GDII-4445 • 24' x 44'/42' • 1,032 sq. ft.

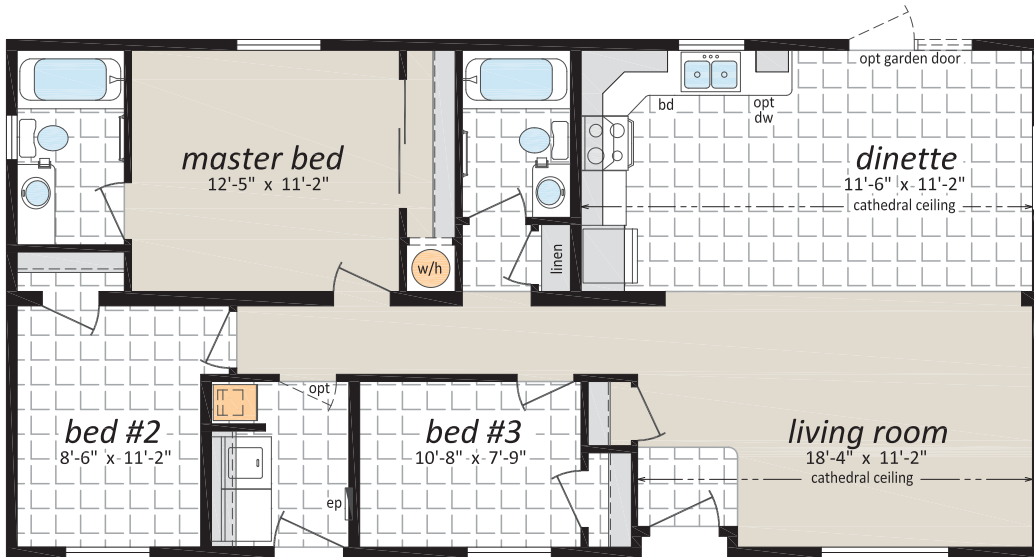




The Genesis II Series

the utah

GDII-4480 • 24' x 48' • 1,152 sq. ft.



the kinnaird

GDII-4481 • 24' x 48' • 1,152 sq. ft.

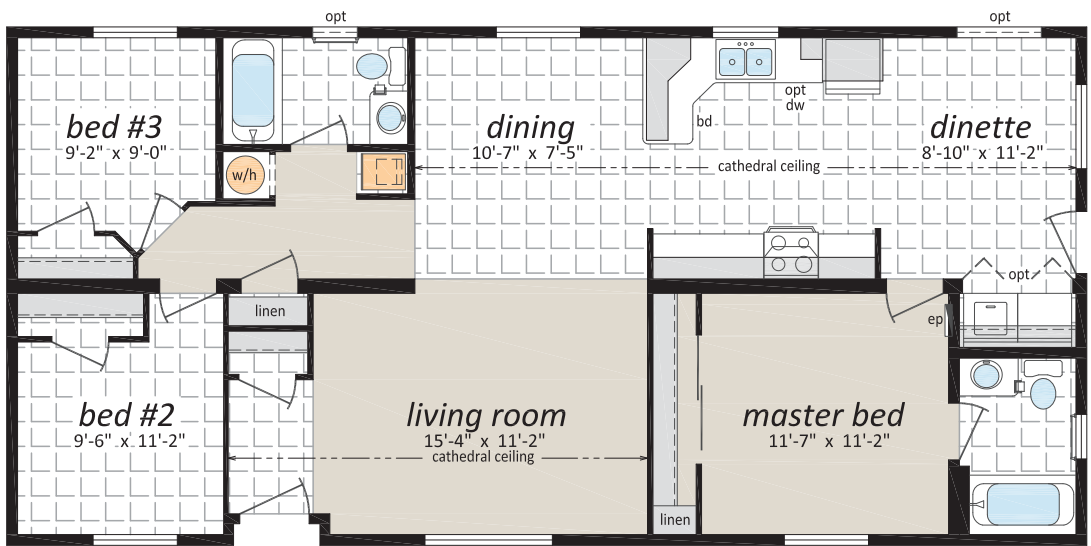




The Genesis II Series

the edgewood

GDII-4500 • 24' x 50' • 1,200 sq. ft.



the balfour

GDII-4501 • 24' x 52'/50' • 1,224 sq. ft.

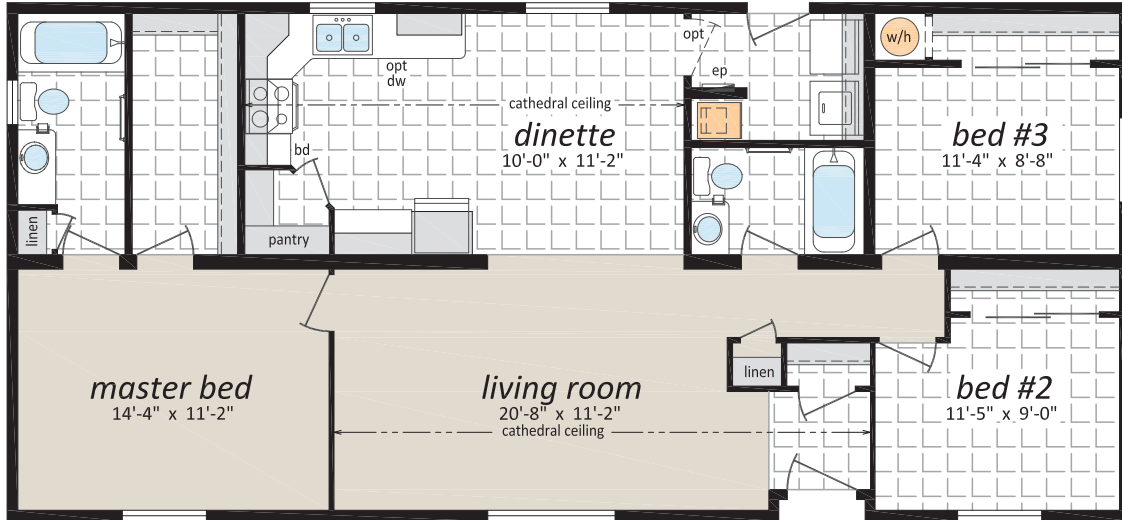




The Genesis II Series

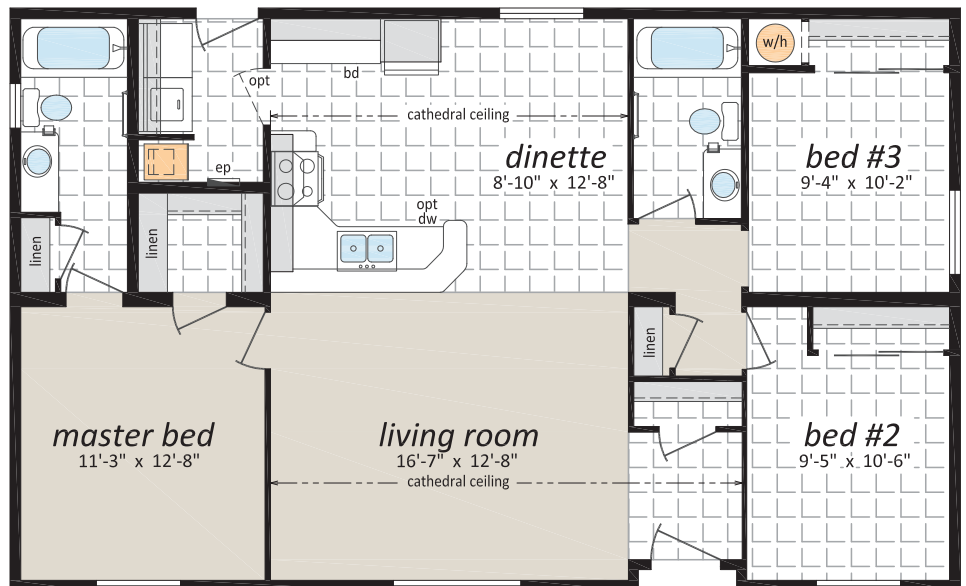
the erickson

GDII-4520 • 24' x 52' • 1,248 sq. ft.



the gilford

GDII-8440 • 27' x 44' • 1,188 sq. ft.

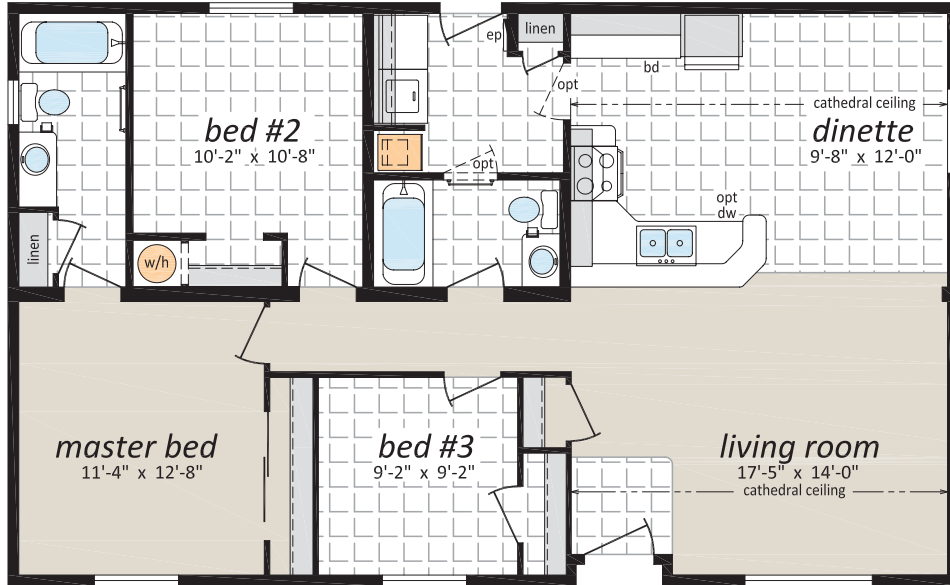




The Genesis II Series

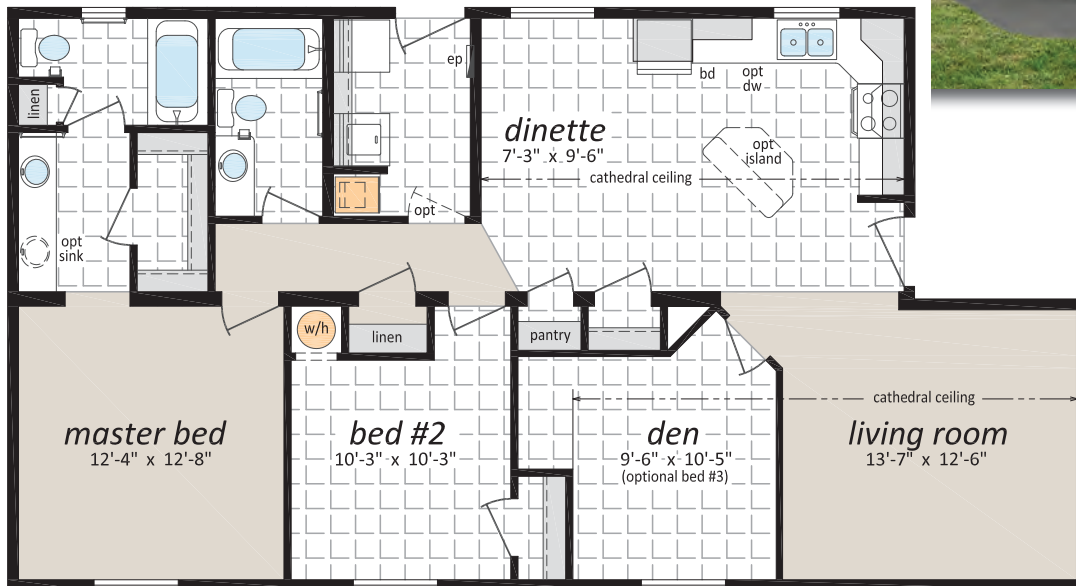
the galiano

GDII-8441 • 27' x 44' • 1,188 sq. ft.



the dalhousie

GDII-8500 • 27' x 42'/50' • 1,242 sq. ft.





The Genesis II Series

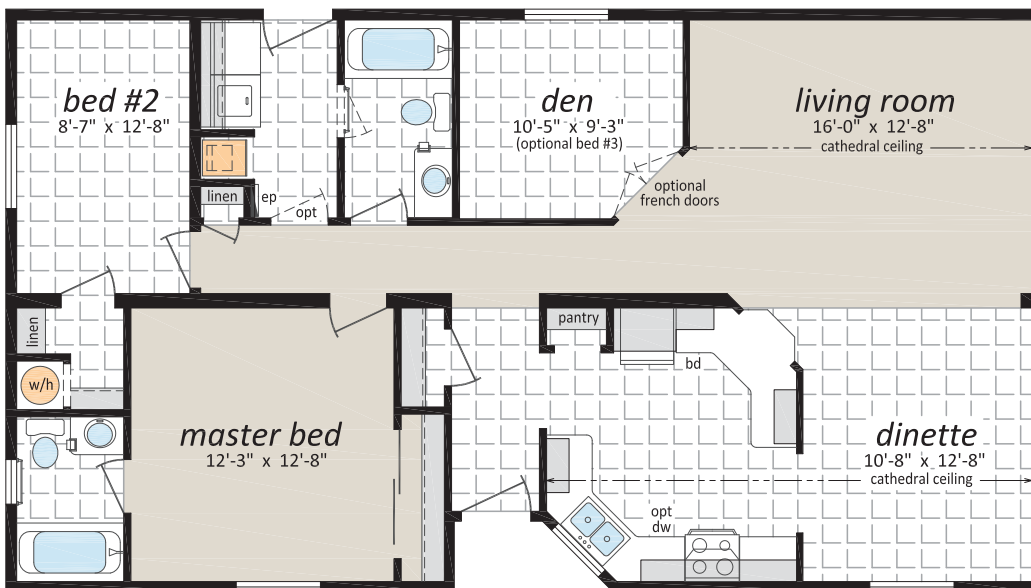
the moresby

GDII-8480 • 27' x 48' • 1,296 sq. ft.



the quadra

GDII-8481 • 27' x 48' • 1,296 sq. ft.

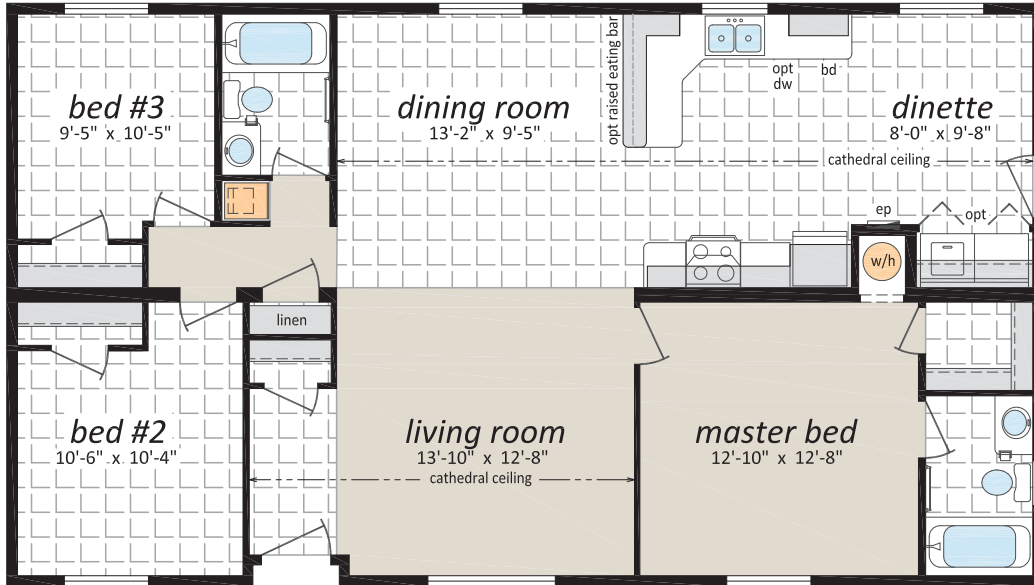




The Genesis II Series

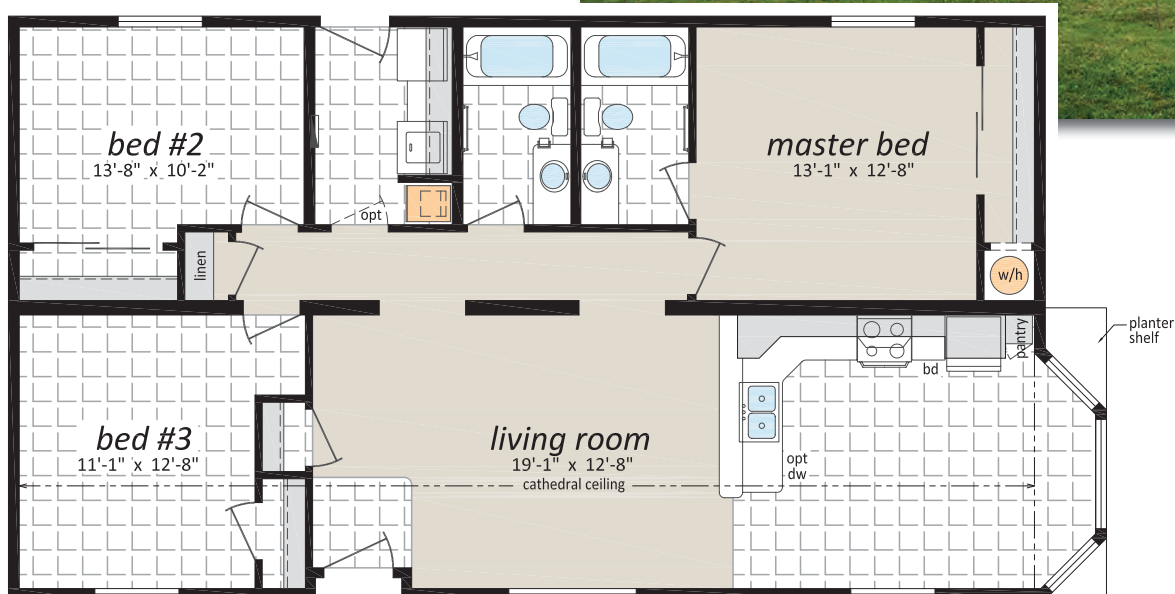
the campania

GDII-8482 • 27' x 48' • 1,296 sq. ft.



the armstrong

GDII-8483 • 27' x 48'/50' • 1,323 sq. ft.





The Genesis II Series

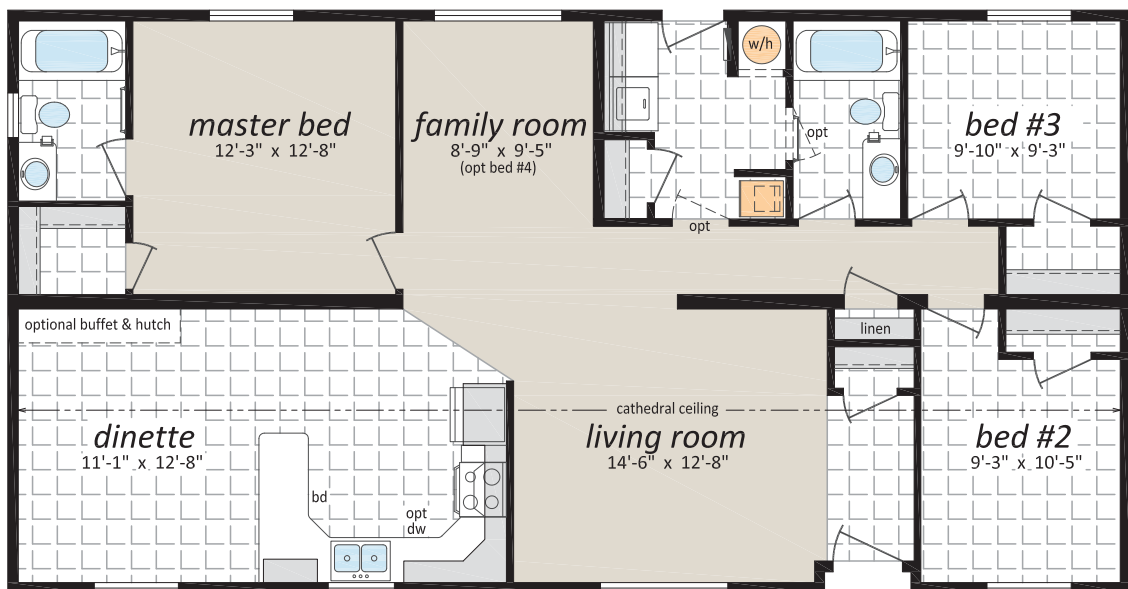
the kelowna

GDII-2752 • 27' x 52' • 1,404 sq. ft.



the saltspring

GDII-8520 • 27' x 52' • 1,404 sq. ft.

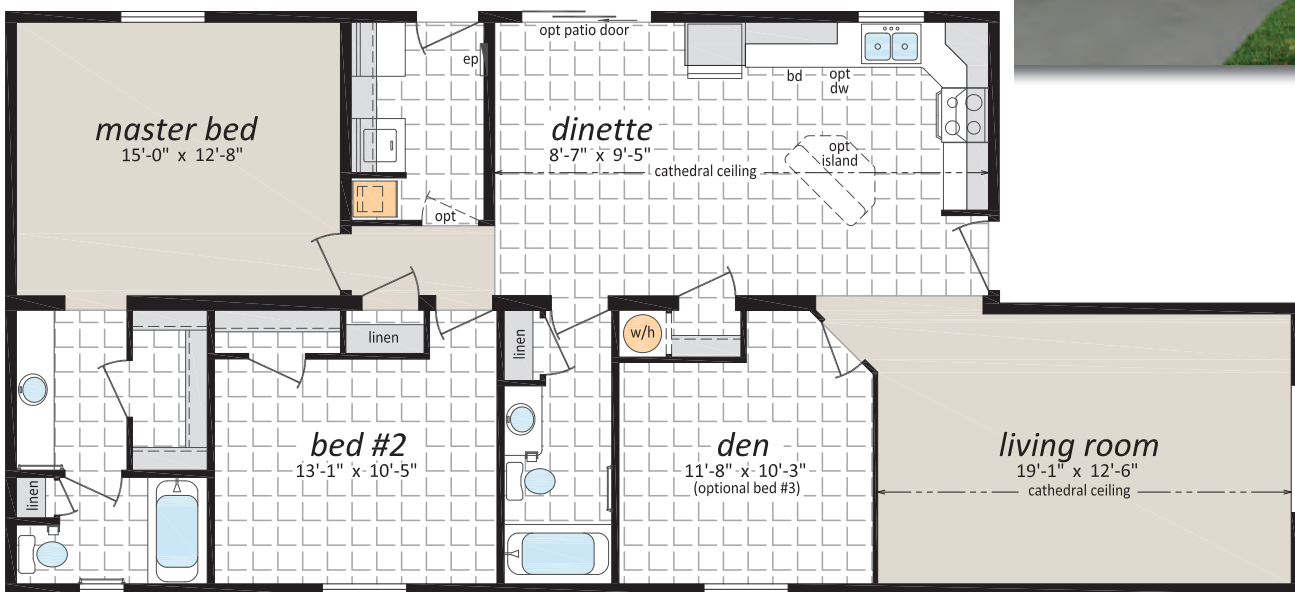




The Genesis II Series

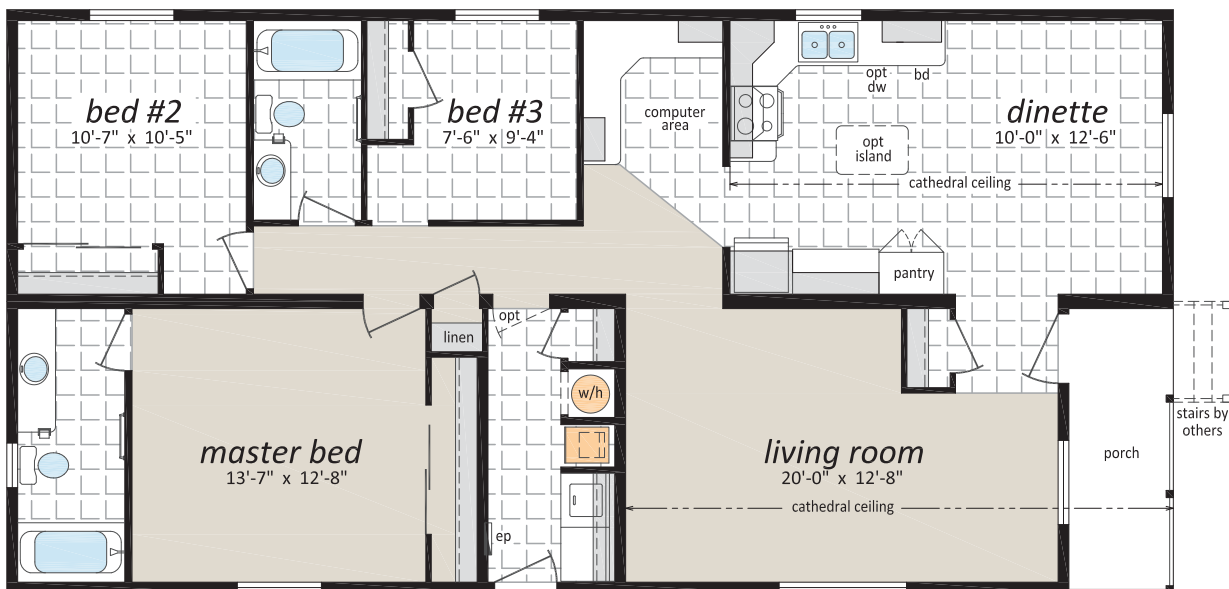
the mcmaster

GDII-8601 • 27' x 46'/60' • 1,431 sq. ft.



the silverton

GDII-8542 • 27' x 54' • 1,458 sq. ft.





The Genesis II Series

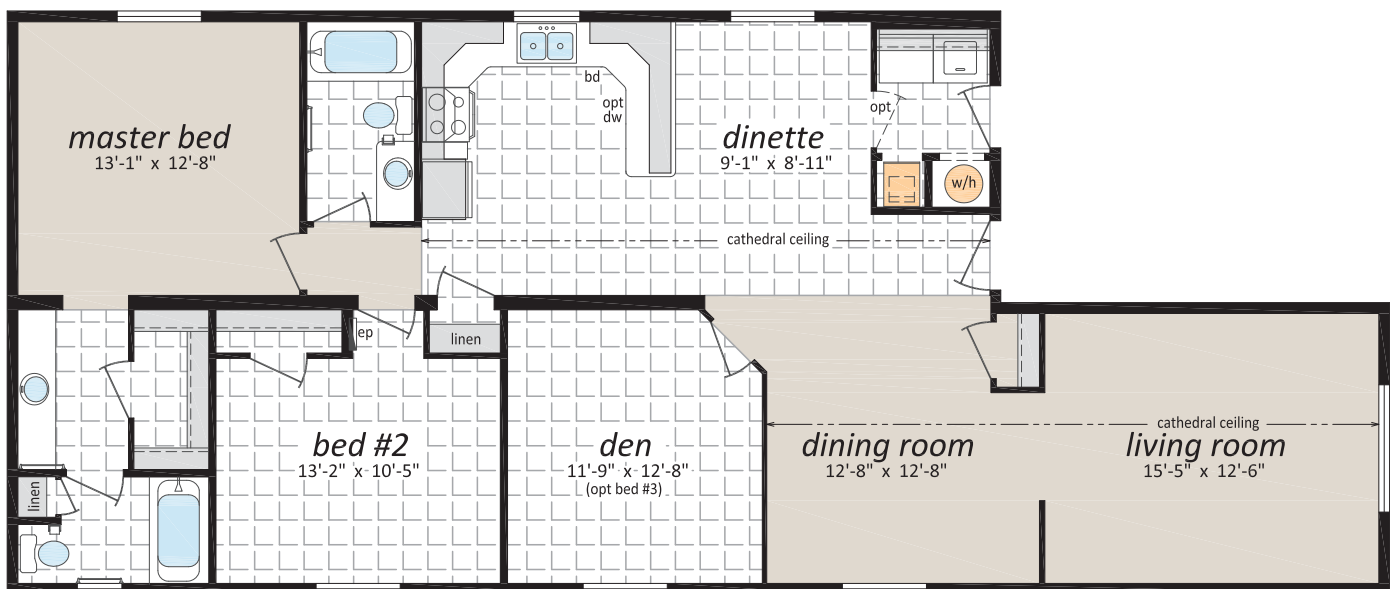
the gabriola

GDII-8540 • 27' x 54'/56' • 1,485 sq. ft.



the mcgill

GDII-8641 • 27' x 46'/64' • 1,485 sq. ft.

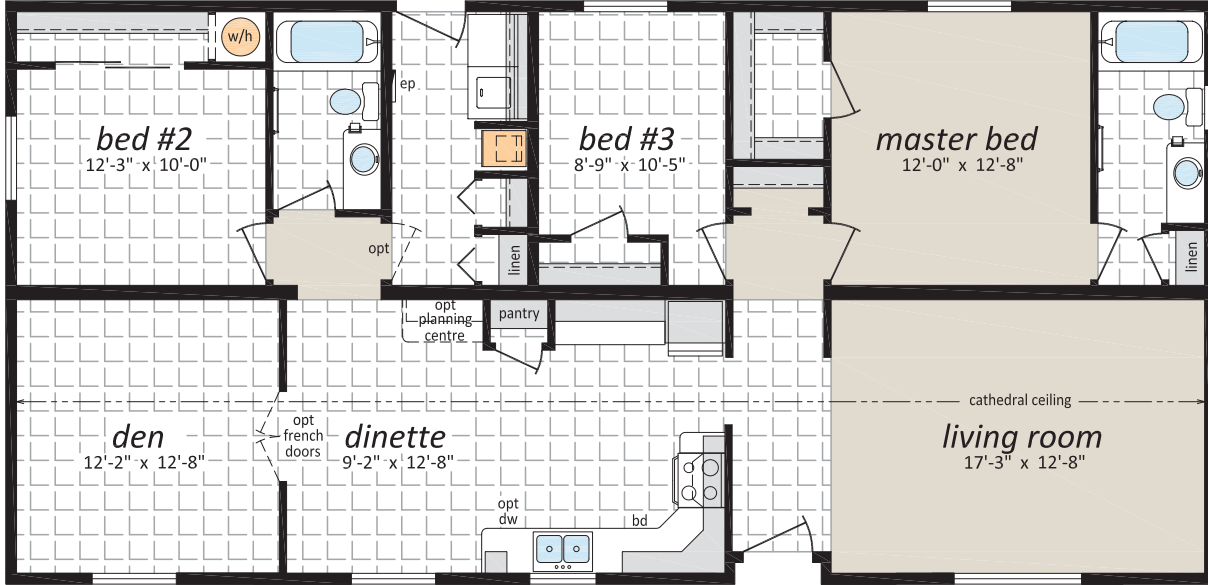




The Genesis II Series

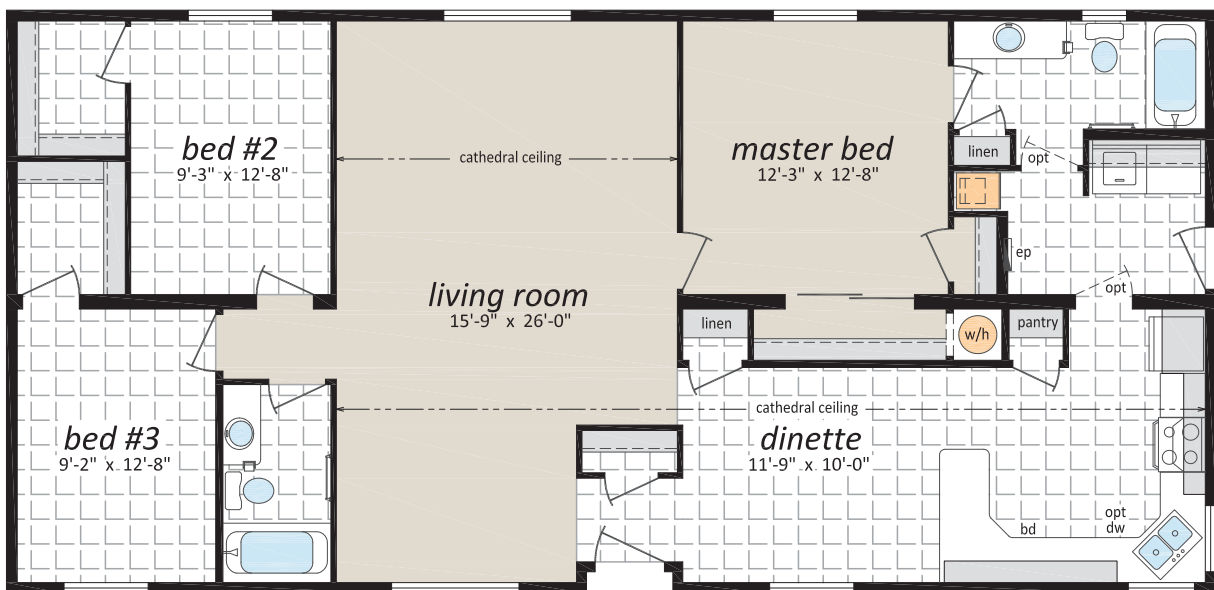
the redonda

GDII-8560 • 27' x 56' • 1,512 sq. ft.



the nicola

GDII-8561 • 27' x 56' • 1,512 sq. ft.





The Genesis II Series

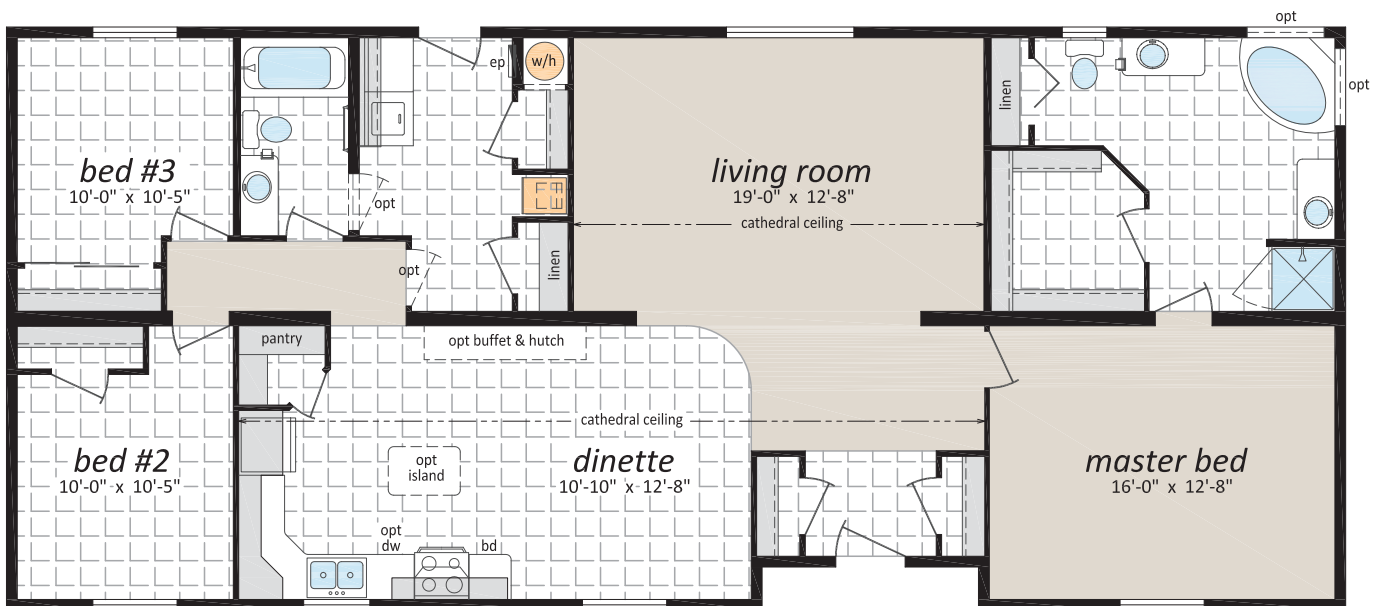
the saturna

GDII-8600 • 27' x 60' • 1,620 sq. ft.



the sonora

GDII-8640 • 27' x 62' • 1,674 sq. ft.





The Genesis II Series

the thetis

GDII-8660 • 27' x 66' • 1,782 sq. ft.



the whistler

GDII-3400 • 30' x 40' • 1,200 sq. ft.



30' Wide Floorplan
For limited areas of BC
(Please check with your SRI Retailer)



The Genesis II Series

Popular Optional Features

Exterior

- Hardie Siding
- Third Gables
- Painted "Smart Start" Fascia, Window and Door Trim
- Painted Smart Start Shutters
- Garden or Patio Doors
- Exterior Door with Victoria, 9 Lite, Harlow or Niagara Insert
- "Ladder" Grids in Windows
- Transom Windows
- Bay Windows
- Skylights
- Octagon Vents
- Electric Door Chimes
- Extra Exterior GFI
- Faux Rock or Shake Accents
- Solar Tubes

Interior

- Upgrade Trim Package
- White Painted Trim Upgrade
- Painted Drywall with Ceiling Cove Moulding
- Clermont White Raised Panel Doors
- Upgrade Lino
- Carpeting in 2nd and 3rd Bedrooms
- 2" Faux Wood Blinds
- French Doors
- Mirrored Bi-fold Closet Doors
- Utility Room Door with Grill
- Freezer Cabinets
- Laundry Cabinets
- Soak Sink with Cabinet
- Ceiling Fan with Lights
- Recessed Pot Lights
- LED Light Disk
- Electric Fireplace with Mantle
- Gas Fireplace with Fan and Mantle



Kitchen

- Natural Wood Cabinet Doors
- Island Work Centre
- Upgrade High Definition Counter Laminate
- Upgrade High Definition Bevelled Counter Edging
- Wood Reveal Counter Edging
- Appliance Garage
- Multi Row Tile Backsplash with mosaic
- Pullout Trash and Recycle bins
- Pantry Cabinets
- Additional Bank of Drawers
- Planning Centre
- Lazy Susan
- Black Sink
- Upgrade Moen Faucets
- Built-In Dishwasher
- Combination Microwave/Range Hood
- Stainless Steel Canopy Range Hood
- Eye Level Oven with Cook Top
- Gas or Ceramic Top Self Cleaning Range
- Two Door Side by Side Refrigerator (with water and ice maker) or Bottom Freezer
- Stainless Appliances

Bathroom

- Oval Tub or Corner Oval Tub
- Jetted Spa Option (available on any tub)
- 2 Person Jetted Tub
- 36", 48" or 60" Shower Stall
- Low Barrier Shower
- Grab Bars
- Assorted Medicine Cabinets

Utilities

- On Demand Water Heater
- 40 Gallon U.S. Gas Water Heater
- Baseboard Heating
- Forced Air Electric Furnace
- Heat Recovery Ventilation Unit
- Stacking Washer and Dryer
- Front Loading Washer and Dryer
- Central Vacuum system and/or Roughed in
- Roughed in for Central Vacuum
- 200 Amp Service Panel
- Extra Telephone /Cable Box(es)
- Pre-wire for Telephone and/or Cable



Authorized Retailer:



This is not a fully detailed specification. SRI Kelowna reserves the right to change specifications, designs, materials and suppliers without notice and without incurring obligation. Information contained herein is from data available at the time of printing. Square footage and other dimensions are approximate. Photos and renderings may show optional features. 01/2019