



# The Lake Country Series

## 14' Wide Single Section Homes



# The Lake Country Series

## Standards and Specifications

### Exterior

- ◆ Maintenance Free Vinyl Siding
- ◆ Fibreglass Shingles
- ◆ Nominal 4/12 roof pitch w/ R-33 Attic Insulation
- ◆ Coach Lights at all Exterior Doors
- ◆ 6-Panel Insulated Exterior Doors
- ◆ Low E & Argon Gas Thermal Pane PVC Windows with Screen and Safety Latch
- ◆ Residential 8' Walls
- ◆ 2x6 Exterior Walls @ 24" o.c. with 3 Belt Rails and R-22 Insulation
- ◆ 19/32" T&G OSB Floor sheathing- Screwed and Glued
- ◆ 2x8 Floor Joists with R33 Insulation
- ◆ Box Steel Frame with Detachable Hitch
- ◆ Exterior G.F.I. Receptacle
- ◆ Frost Free Exterior Tap
- ◆ Poly Vapour Barrier
- ◆ Heat Tape Receptacle

### Interior

- ◆ Cathedral Ceiling in Living Room, Kitchen & Dining Area
- ◆ Residential Textured Ceilings
- ◆ Flat-Panel White Interior Doors
- ◆ Carpet in LR & MBR (Most Models)
- ◆ Linoleum Elsewhere
- ◆ Designer Light Package
- ◆ Designer Hardware Package
- ◆ 2" Blinds Throughout

### Bathroom

- ◆ One Piece Tub & Shower w/ Single-Lever Faucet
- ◆ Dual Handle Vanity Faucets
- ◆ Designer Light Fixture over Vanity
- ◆ Curved Shower Rod /w Liner
- ◆ 4" x 4" Spa-white Tile Backsplash
- ◆ Exhaust Fan
- ◆ G.F.I. Protected Receptacle
- ◆ Privacy Lock

### Kitchen

- ◆ Rangehood with Two Speeds and Light, Vented to Exterior
- ◆ Stainless Steel Kitchen Sink
- ◆ Single-Lever Faucet /w Sprayer
- ◆ Modular PVC Cabinets with Designer Hardware
- ◆ Bank of Drawers (4 drawers)
- ◆ Deep Cabinet over Refrigerator
- ◆ 18 Cu. Ft. 2- Door Frost Free Refrigerator
- ◆ 30" Easy Clean Electric Range
- ◆ 6" x 6" Tile Backsplash

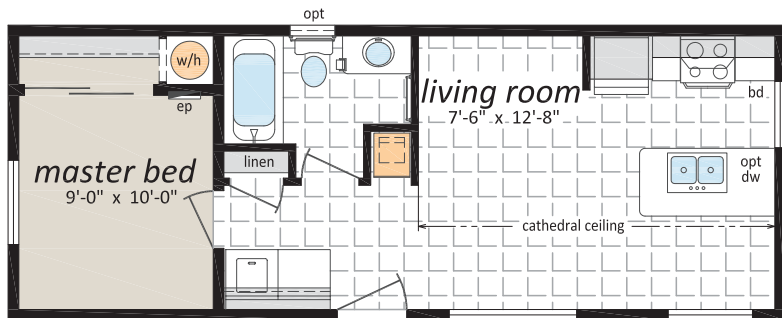
### Utilities

- ◆ 40 Gallon (IMP) Electric Water Heater
- ◆ High-Efficiency A/C Ready Natural Gas Furnace with Electronic Ignition
- ◆ Smoke Detectors
- ◆ Plumbed and Wired for Washer and Dryer
- ◆ Heat Tape Receptacle
- ◆ Built to CSA Z-240 Standard

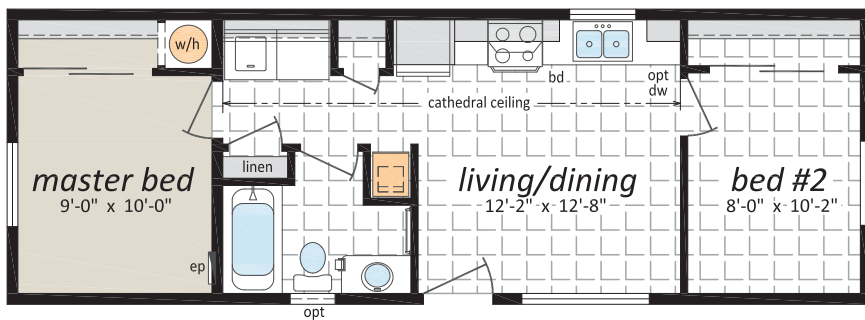


# The Lake Country Series

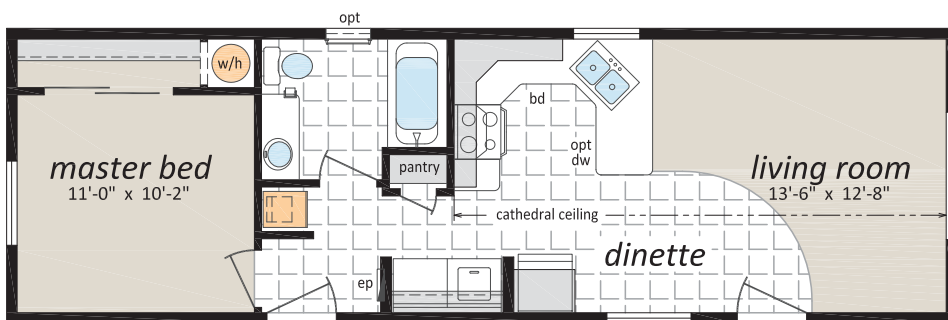
LC-836, "The Adams" 14' x 36' - 504 sq.ft.



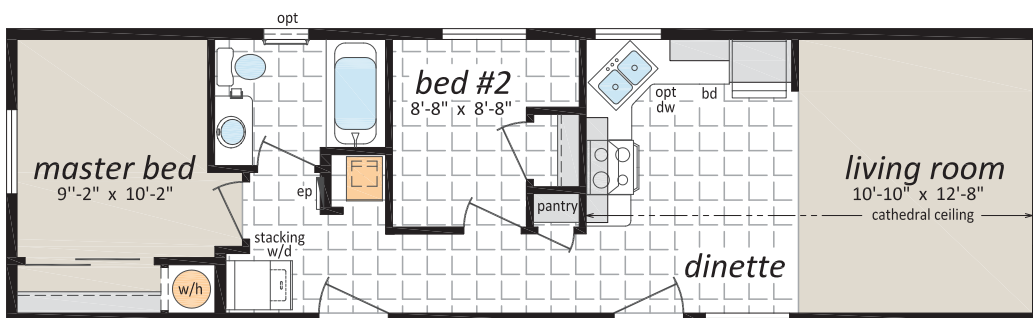
LC-841 "The Clearwater" 14' x 40' - 560 sq.ft.



LC-844, "The Garibaldi" 14' x 44' - 616 sq.ft.



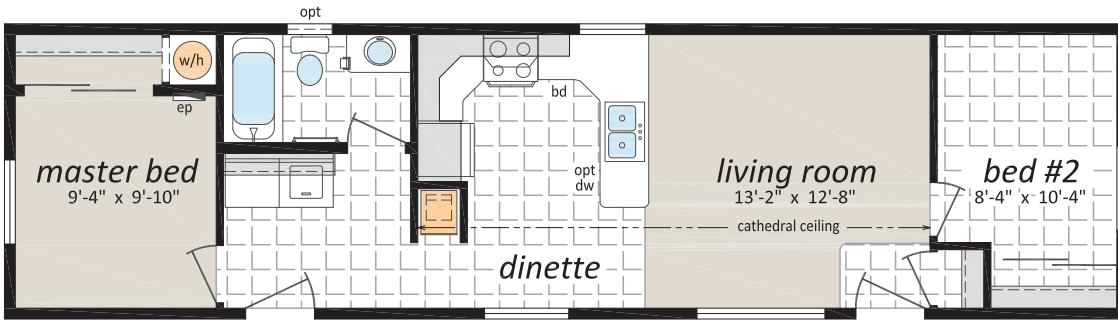
LC-848, "The Kokanee" 14' x 48' - 672 sq.ft.



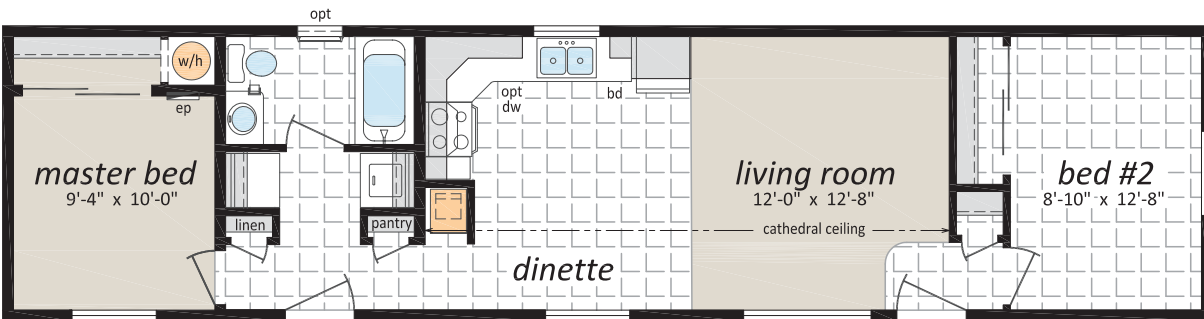


# The Lake Country Series

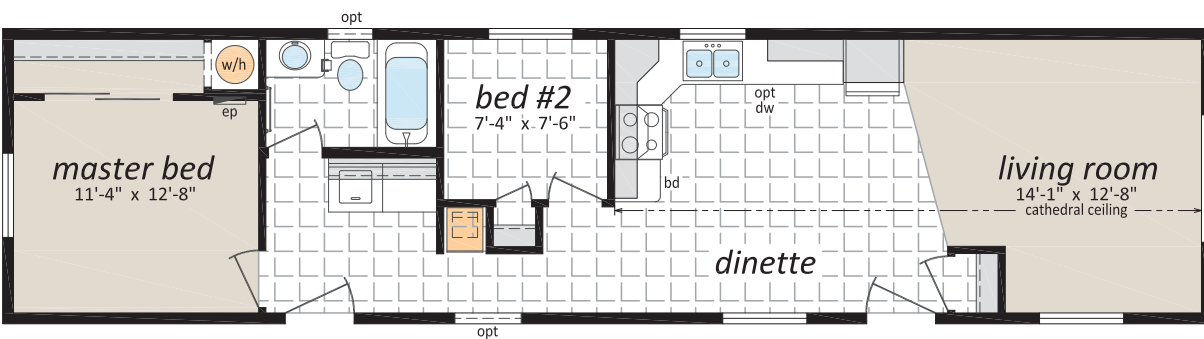
LC-852, "The Kootenay" 14' x 52' - 728 sq.ft.



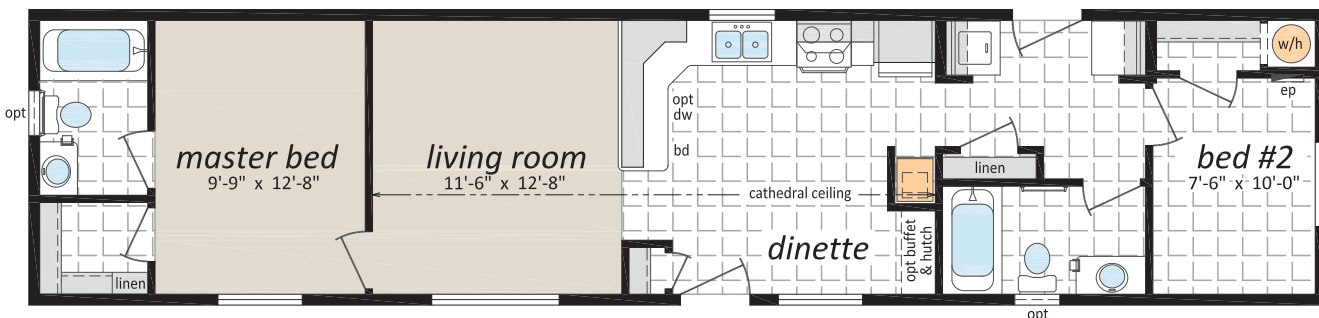
LC-856, "The Nechako" 14' x 56' - 784 sq.ft.



LC-805, "The Shuswap" 14' x 56' - 784 sq.ft.

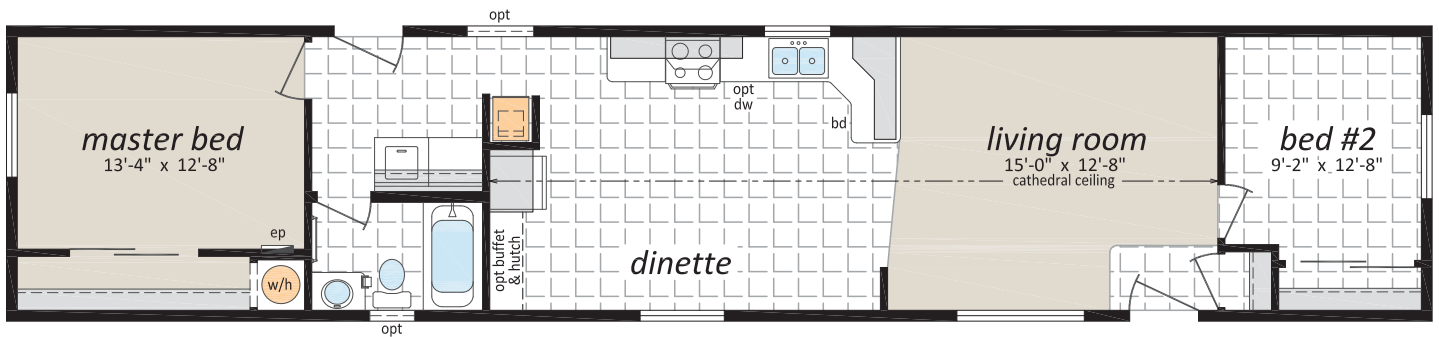


LC-862, "The Takla" 14' x 60' - 840 sq.ft.

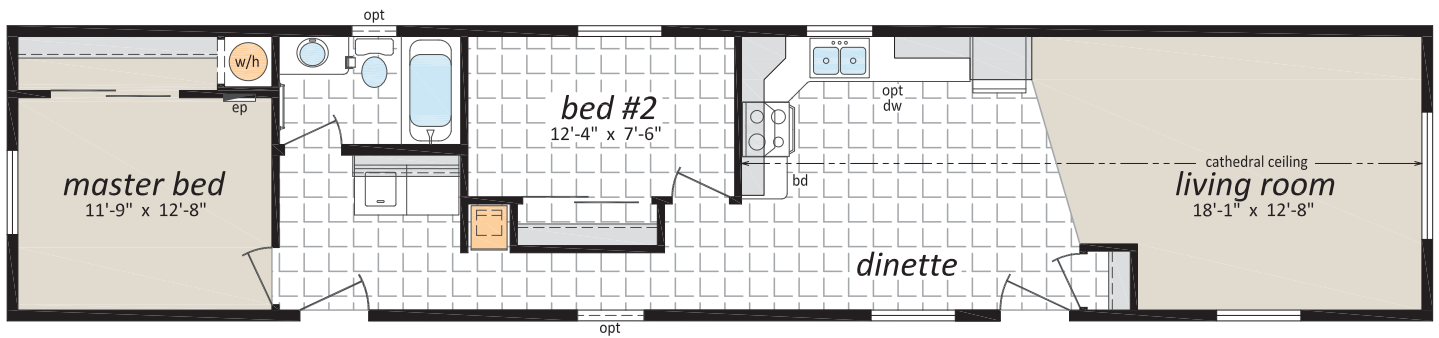


# The Lake Country Series

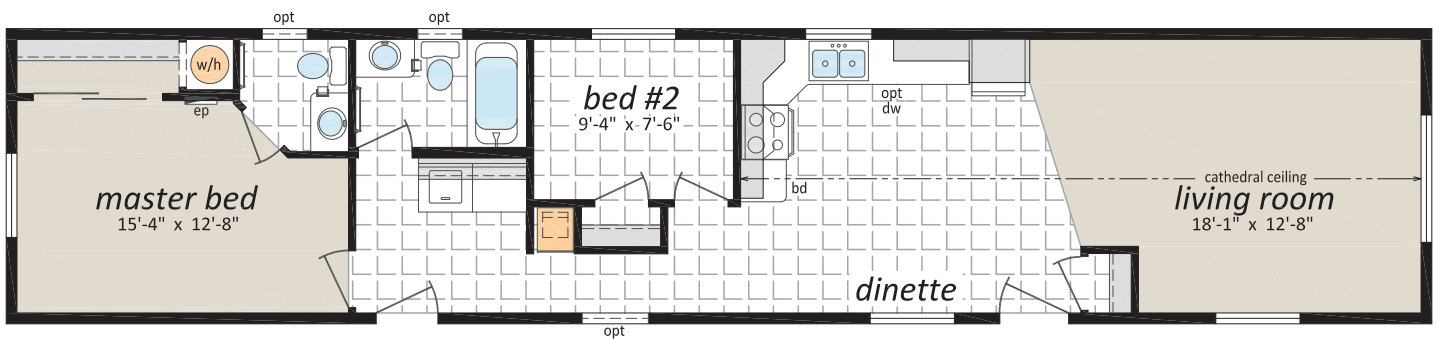
LC-810, "The Colwood" 14' x 66' - 924 sq.ft.



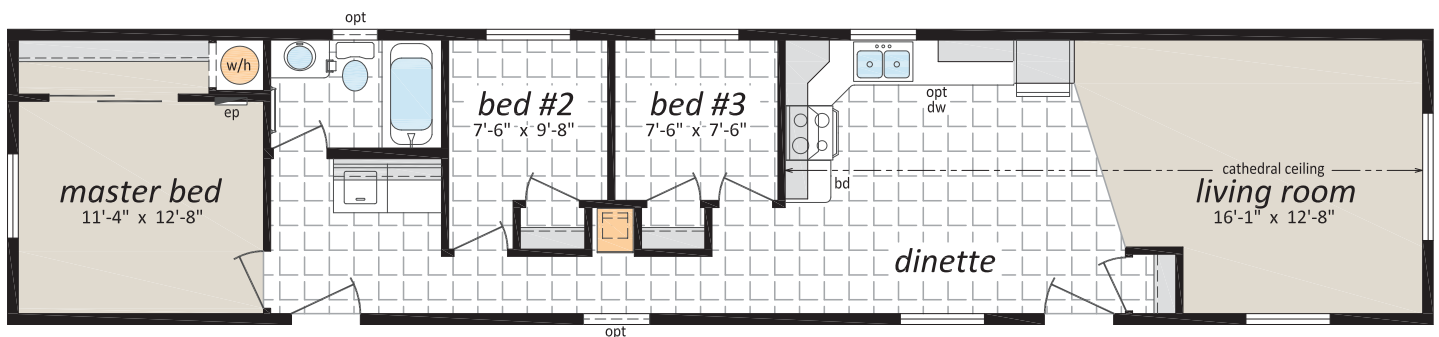
LC-830, "The Kelsey" 14' x 66' - 924 sq.ft.



LC-835, "The Cowichan" 14' x 66' - 924 sq.ft.

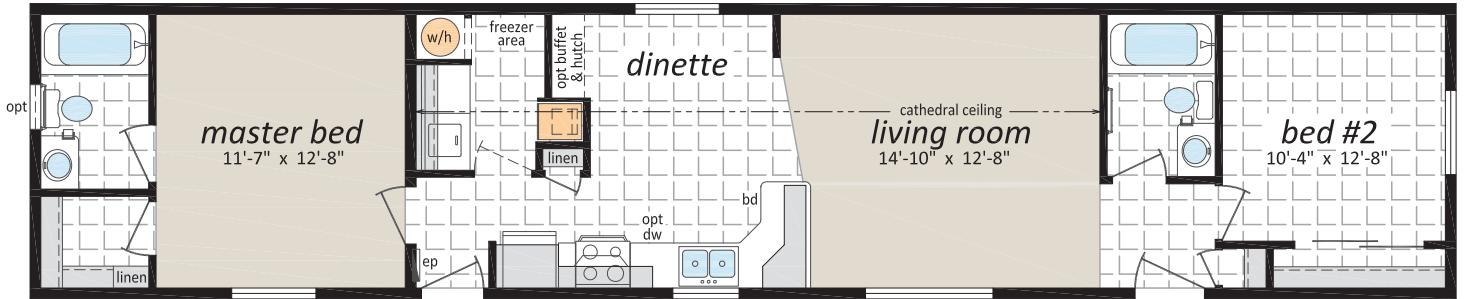


LC-850, "The Langdale" 14' x 66' - 924 sq.ft.

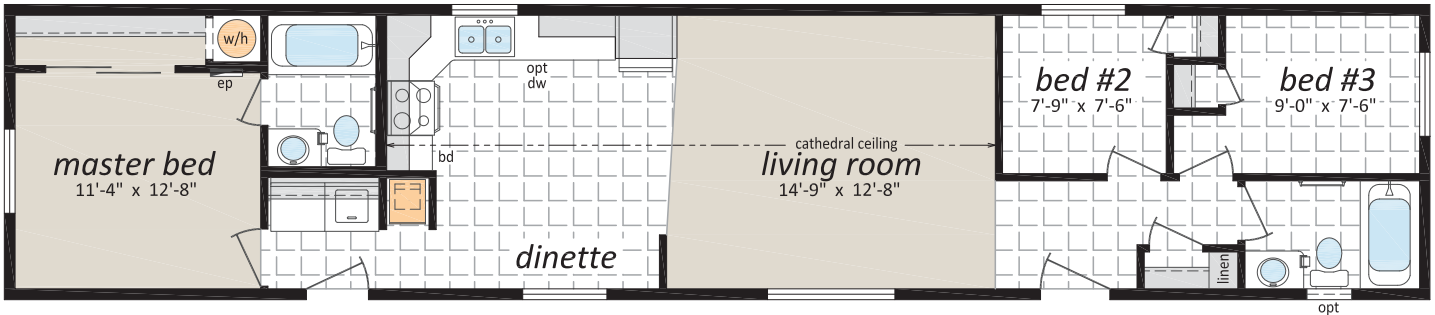


# The Lake Country Series

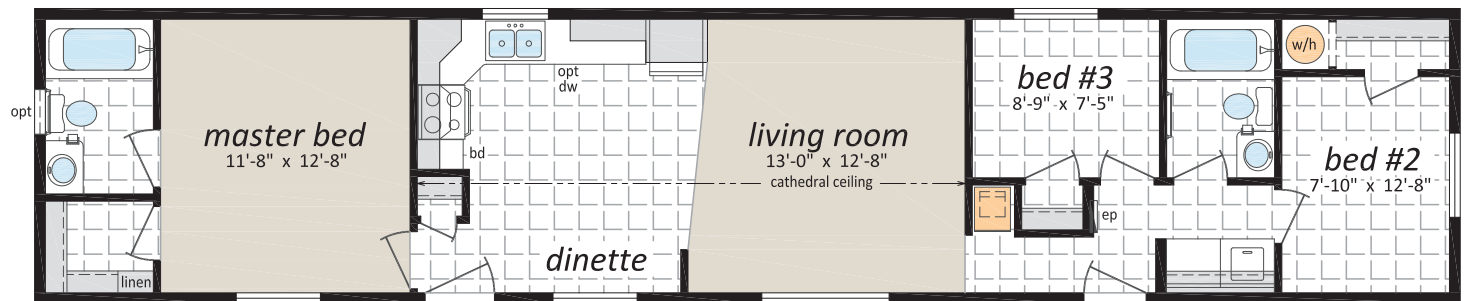
LC-860, "The Christina" 14' x 66' - 924 sq.ft.



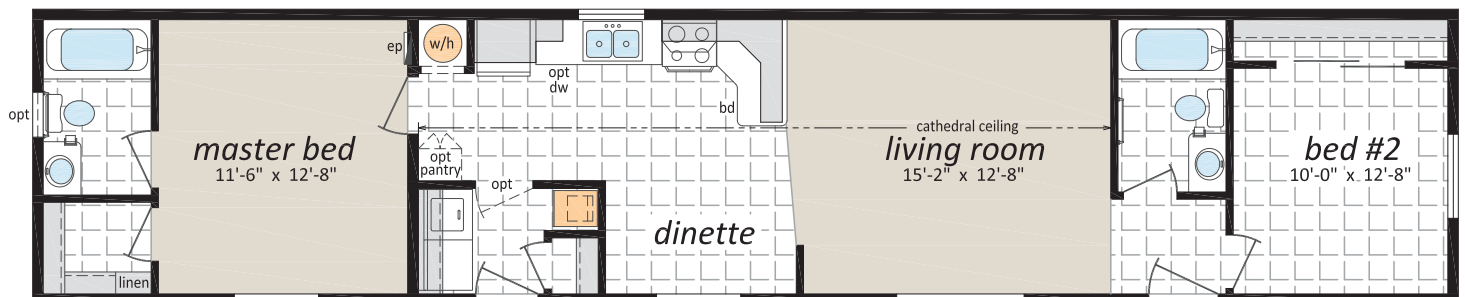
LC-865, "The Okanagan" 14' x 66' - 924 sq.ft.



LC-868, "The Kalamalka" 14' x 66' - 924 sq.ft.

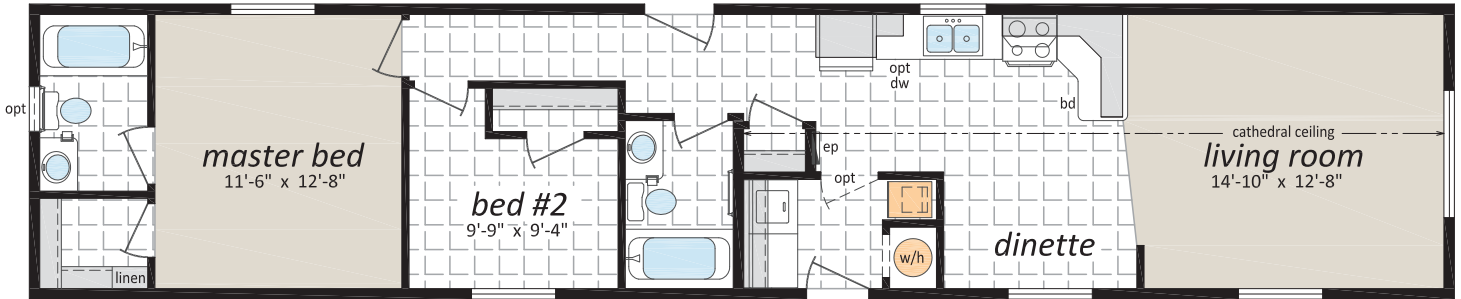


LC-870, "The Logan" 14' x 66' - 924 sq.ft.

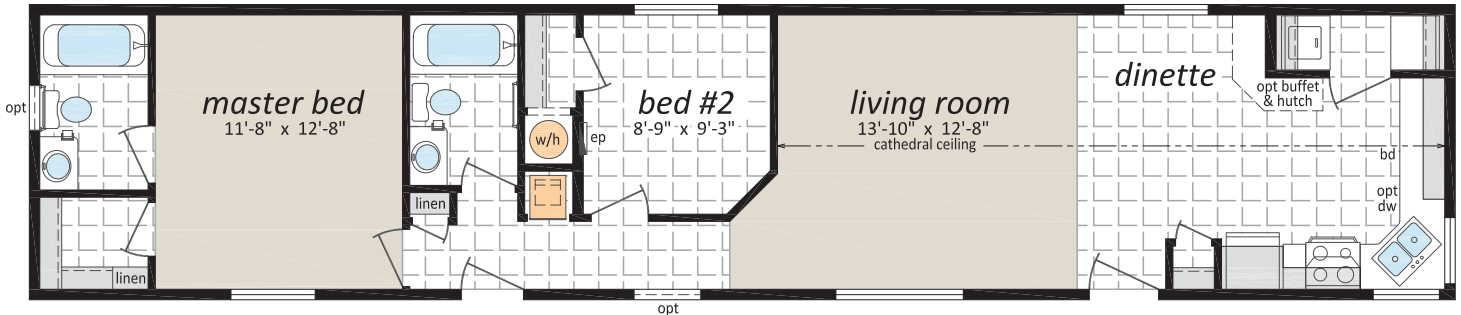


# The Lake Country Series

LC-875, "The Williston" 14' x 66' - 924 sq.ft.



LC-880, "The Stuart" 14' x 66' - 924 sq.ft.



## Did you know?

SRI homes are built indoors, never exposed to the outdoor elements, and we continually inspect our homes to ensure our rigorous construction standards are met.

We use quality, brand-name building materials, fixtures and appliances in every home we build.



# The Lake Country Series



## Popular Optional Features

### Exterior

- Hardie Siding
- Third Gables
- Painted "Smart Start" Fascia, Window and Door Trim
- Painted Smart Start Shutters
- Faux Rock or Shake Accents
- Garden and Patio Doors
- Exterior Door with Victoria, 9 Lite, Harlow or Niagara Insert
- "Ladder" Grids in Windows
- Bay Windows
- Skylights
- Octagon Vents
- Electric Door Chimes
- Extra Exterior GFI
- Solar Tubes

### Interior

- Upgrade Trim Package
- White Painted Trim Upgrade
- Painted Drywall with Ceiling Cove Moulding
- Clermont White Raised Panel Passage Doors
- Upgrade Lino
- Carpeting in 2nd and 3rd Bedrooms
- 2" Faux Wood Blinds
- French Doors
- Mirrored Bi-fold Closet Doors
- Utility Room Door with Grill
- Freezer Cabinets
- Laundry Cabinets
- Soak Sink with Cabinet
- Ceiling Fan with Lights
- Recessed Pot Lights
- LED Light Disk
- Electric Fireplace with Mantle
- Gas Fireplace with Fan and Mantle



Authorized Retailer:

### Kitchen

- Natural Wood Cabinet Doors
- Island Work Centre
- Upgrade High Definition Counter Laminate
- Upgrade High Definition Bevelled Counter Edging
- Oak Reveal Counter Edging
- Appliance Garage
- Multi Row Backsplash
- Pullout Trash and Recycle bins
- Pantry Cabinets
- Additional Bank of Drawers
- Planning Centre
- Lazy Susan
- Black Sink
- Upgrade Faucets
- Built-In Dishwasher
- Combination Microwave/Range Hood
- Eye Level Oven with Cook Top
- Ceramic Top Self Cleaning Range
- Two Door Side by Side Refrigerator (with water and ice maker)
- Stainless Appliances
- Stainless Steel Canopy Range Hood

### Bathroom

- Oval Tub or Corner Oval Tub
- Jetted Spa Option (available on any tub)
- 2 Person Jetted Tub
- 36", 48" or 60" Shower Stall
- Low Barrier Shower
- Grab Bars
- Assorted Medicine Cabinets

### Utilities

- On Demand Water Heater
- 40 Gallon U.S. Gas Water Heater
- Baseboard Heating
- Forced Air Electric Furnace
- Stacking Washer and Dryer
- Front Loading Washer and Dryer
- Central Vacuum System
- Roughed in for Central Vacuum
- 200 Amp Service Panel
- Extra Telephone /Cable Box(es)
- Pre-wire for Telephone and/or Cable



This is not a fully detailed specification. SRI Kelowna reserves the right to change specifications, designs, materials and suppliers without notice and without incurring obligation. Information contained herein is from data available at the time of printing. Square footage and dimensions are approximate. Furniture placement shown is for suggestion only. Photos and renderings may show optional features. 01/2019