



The Lake Country Series

16' Wide Single Section Homes



The Lake Country Series

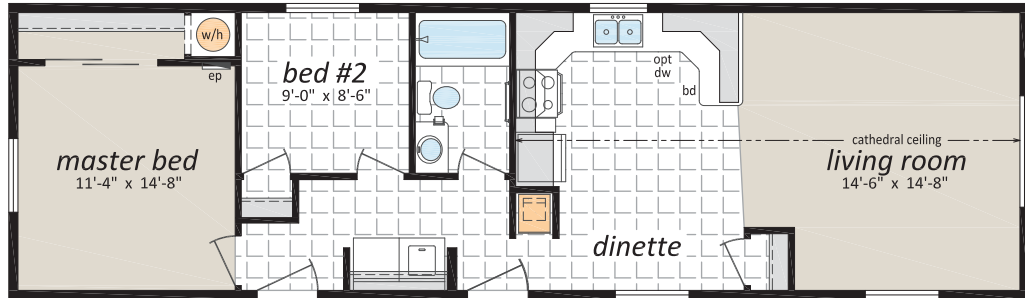
16' Wide Single Section Homes

"The Fraser" LC-6540, 16' x 54', 864 sq. ft.

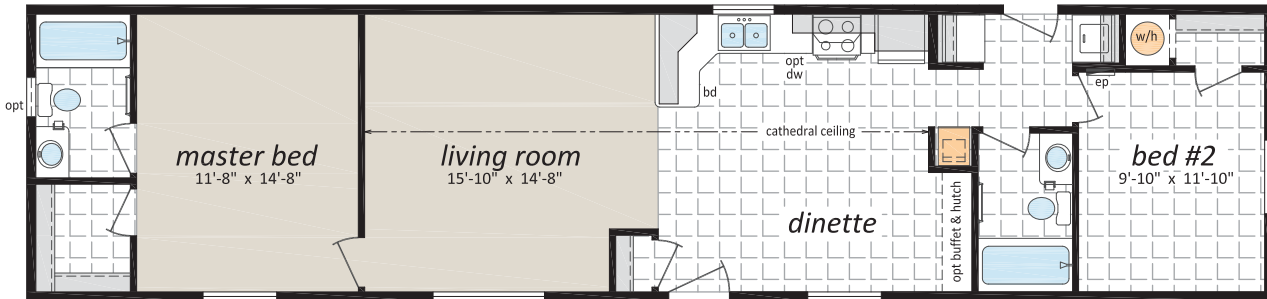


10 YEAR

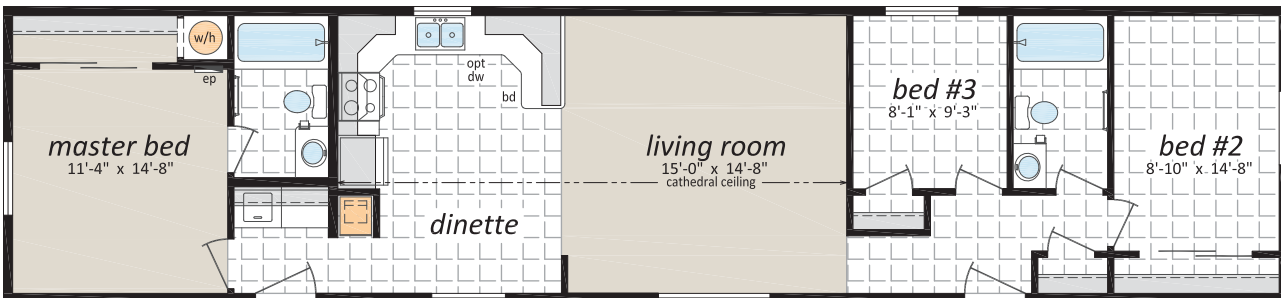
Pacific
 HOME WARRANTY



"The Coldstream" LC-6660, 16' x 66', 1,056 sq. ft.



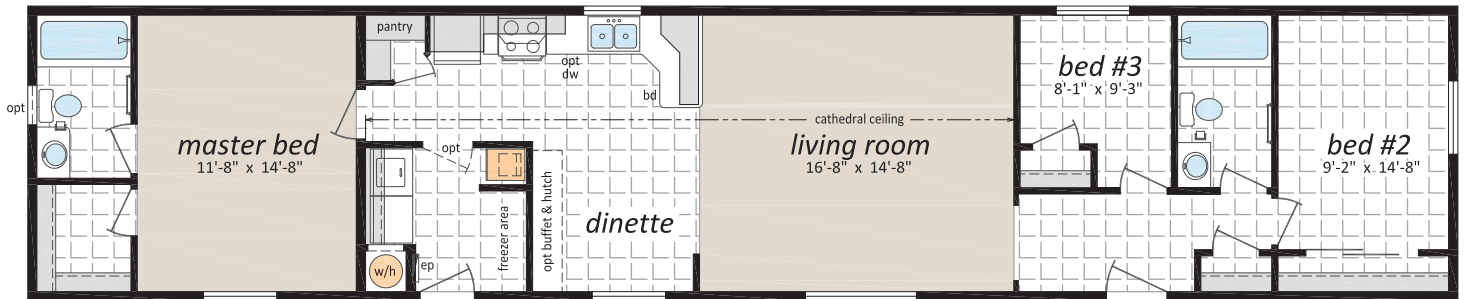
"The Skeena" LC-6680, 16' x 68', 1,088 sq. ft.



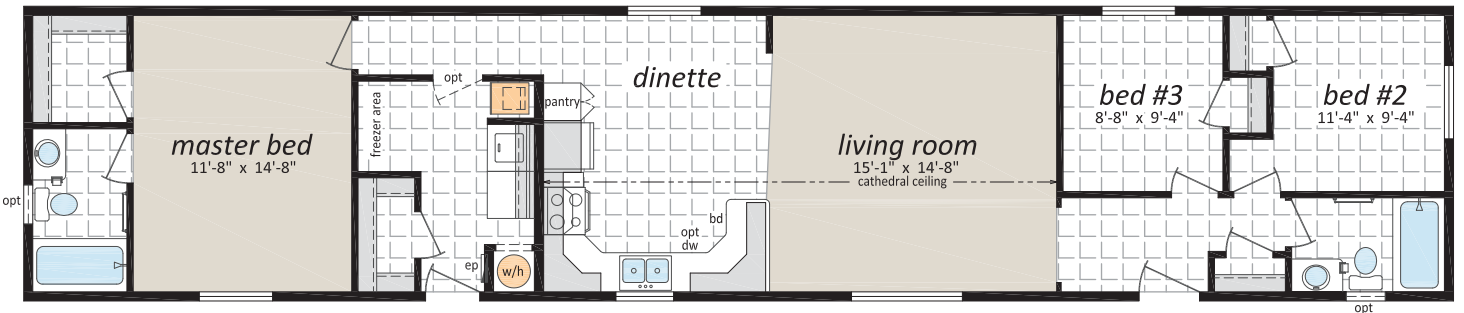
The Lake Country Series

16' Wide Single Section Homes

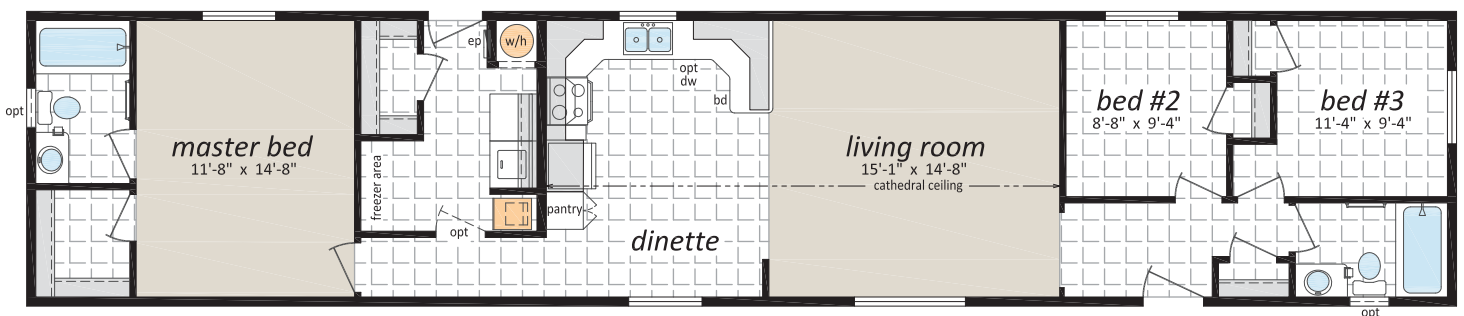
"The Bulkley" LC-6760, 16' x 76', 1,216 sq. ft.



"The Omenica" LC-6761, 16' x 76', 1,216 sq. ft.



"The Seymour" LC-6762, 16' x 76', 1,216 sq. ft.

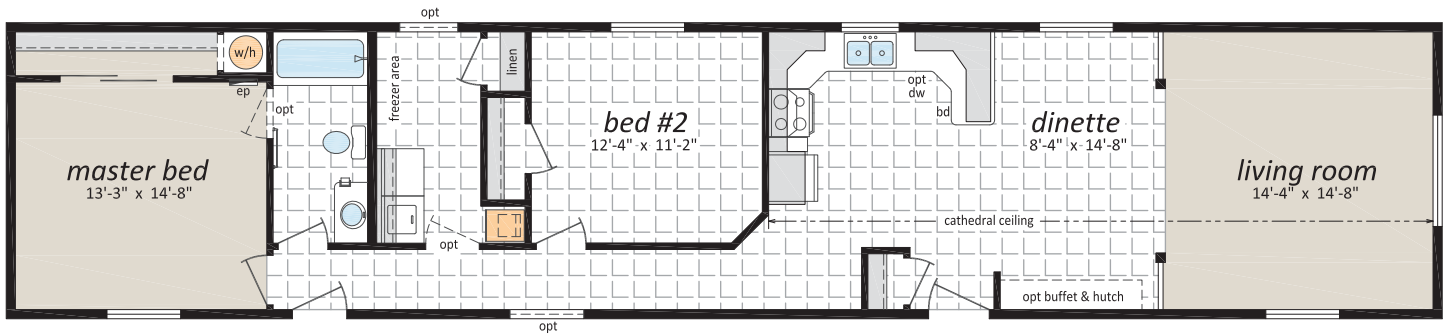
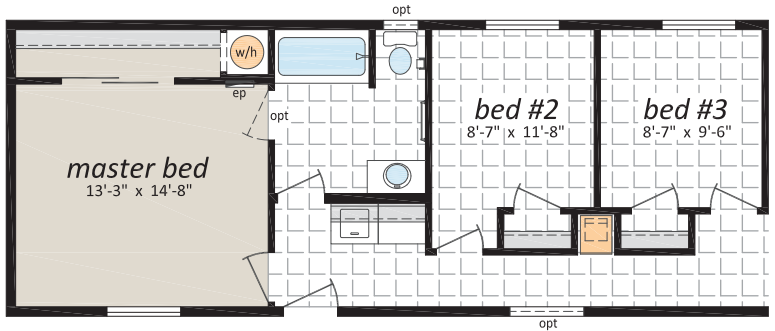


The Lake Country Series

16' Wide Single Section Homes

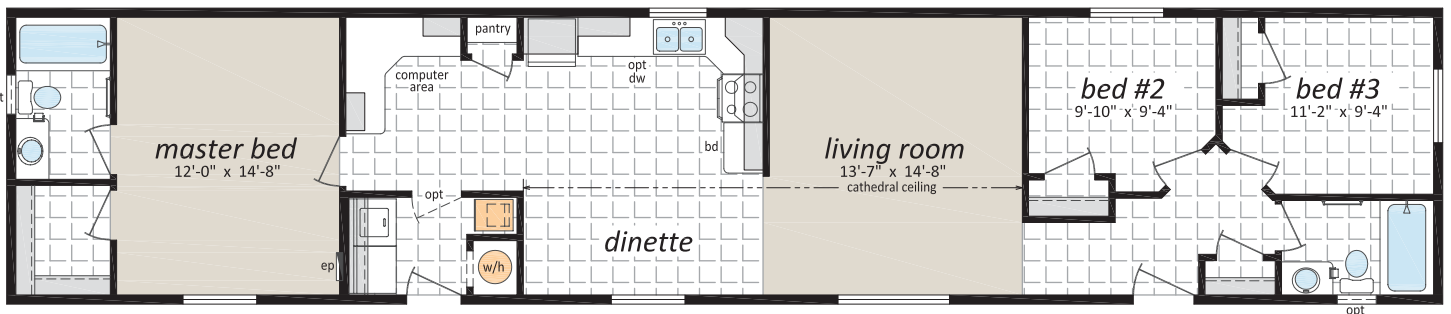
"The Thompson" LC-6763, 16' x 76', 1,216 sq. ft.

Optional Bedroom #3



"The Chilcotin" LC-6764, 16' x 76', 1,216 sq. ft.

Alternate Ensuite



The Lake Country Series

16' Wide Single Section Homes

Standards and Specifications

Exterior

- ◆ Maintenance Free Vinyl Siding & Trim
- ◆ Fibreglass Shingles
- ◆ Nominal 3.5/12 Roof Pitch
- ◆ R-33 Attic Insulation
- ◆ 15/32" Roof Sheathing with Ice and Water Protection
- ◆ Perimeter Eave Venting System
- ◆ Coach Lights at all Exterior Doors
- ◆ 6-Panel Insulated Exterior Doors
- ◆ Low E & Argon Gas Thermal Pane PVC Windows with Screen and Safety Latch
- ◆ Residential 8' Walls
- ◆ 2x6 Exterior Walls @ 24" o.c. with 3 Belt Rails and R-22 Insulation
- ◆ 19/32" T&G Floor Sheathing-Screwed & Glued
- ◆ 2x10 Floor Joists with R33 Insulation
- ◆ Box Steel Frame with Detachable Hitch
- ◆ Weather-Proof Exterior G.F.I. Receptacle
- ◆ Frost Free Exterior Tap
- ◆ Poly Vapour Barrier

Interior

- ◆ Cathedral Ceiling in Living Room, Kitchen & Dining Area
- ◆ Residential Textured Ceilings
- ◆ Flat-Panel White Interior Doors
- ◆ Quality Carpet in LR & MBR
- ◆ Linoleum All Other Areas
- ◆ Designer Light Package
- ◆ Designer Hardware Package
- ◆ 2" Blinds Through-Out

Kitchen

- ◆ Exterior-Vented Rangehood with Light
- ◆ Stainless Steel Double-Bowl Kitchen Sink
- ◆ Single-Lever Faucet /w Sprayer
- ◆ Modular PVC Cabinets /w Designer Hardware
- ◆ Deep Cabinet over Refrigerator
- ◆ Bank of Drawers (4 drawers)
- ◆ 18 Cu. Ft. 2- Door Frost Free Refrigerator
- ◆ 30" Easy Clean Electric Range
- ◆ 6" x 6" Ceramic Tile Backsplash

Bathroom

- ◆ One Piece Tub and Shower with Single-Lever Faucet
- ◆ Dual Handle Vanity Faucets
- ◆ Designer Light Fixture over Vanity
- ◆ Curved Shower Rod /w Liner
- ◆ 4" x 4" Spa-white Tile Backsplash
- ◆ Exhaust Fan in Bathroom
- ◆ G.F.I. Protected Receptacle
- ◆ Privacy Lock

Utilities

- ◆ 100 Amp Electrical Panel
- ◆ 40 Gallon (Imp.) Electric Water Heater
- ◆ High-Efficiency, A/C Ready, Natural Gas Furnace with Electronic Ignition
- ◆ Smoke/CO Detectors
- ◆ Plumbed and Wired for Washer and Dryer
- ◆ Heat Tape Receptacle
- ◆ Built to CSA Z-240 Standard



10 YEAR

Pacific
HOME WARRANTY

The Lake Country Series

16' Wide Single Section Homes



Popular Optional Features

Exterior

- Hardie Siding
- Third Gables
- Painted "Smart Start" Fascia, Window and Door Trim
- Painted Smart Start Shutters
- Garden or Patio Doors
- Exterior Door with Victoria, 9 Lite, Harlow or Niagara Insert
- "Ladder" Grids in Windows
- Bay Windows
- Skylights
- Octagon Vents
- Electric Door Chimes
- Extra Exterior GFI
- Faux Rock or Shake Accents
- Solar Tubes

Interior

- Upgrade Trim Package
- White Painted Trim Upgrade
- Painted Drywall with Ceiling Cove Moulding
- Clermont White Raised Panel Doors
- Upgrade Lino
- Carpeting in 2nd and 3rd Bedrooms
- 2" Faux Wood Blinds
- French Doors
- Mirrored Bi-fold Closet Doors
- Utility Room Door with Grill
- Freezer Cabinets
- Laundry Cabinets
- Soak Sink with Cabinet
- Ceiling Fan with Lights
- Recessed Pot Lights
- LED Light Disk
- Electric Fireplace with Mantle
- Gas Fireplace with Fan and Mantle

Kitchen

- Natural Wood Cabinet Doors
- Island Work Centre
- Upgrade High Definition Counter Laminate
- Upgrade High Definition Bevelled Counter Edging
- Wood Reveal Counter Edging
- Appliance Garage
- Multi Row Tile Backsplash with mosaic
- Pullout Trash and Recycle bins
- Pantry Cabinets
- Additional Bank of Drawers
- Planning Centre
- Lazy Susan
- Black Sink
- Upgrade Moen Faucets
- Built-In Dishwasher
- Combination Microwave/Range Hood
- Eye Level Oven with Cook Top
- Ceramic Top Self Cleaning Range
- Two Door Side by Side Refrigerator (with water and ice maker)
- Stainless Appliances
- Stainless Steel Canopy Range Hood

Bathroom

- Oval Tub or Corner Oval Tub
- Jetted Spa Option (available on any tub)
- 2 Person Jetted Tub
- 36", 48" or 60" Shower Stall
- Low Barrier Shower
- Grab Bars
- Assorted Medicine Cabinets

Utilities

- On Demand Water Heater
- 40 Gallon U.S. Gas Water Heater
- Baseboard Heating
- Forced Air Electric Furnace
- Stacking Washer and Dryer
- Front Loading Washer and Dryer
- Central Vacuum System
- Roughed in for Central Vacuum
- 200 Amp Service Panel
- Extra Telephone /Cable Box(es)
- Pre-wire for Telephone and/or Cable



Authorized Retailer:



This is not a fully detailed specification. SRI Homes reserves the right to change specifications, designs, materials and suppliers without notice and without incurring obligation. Information contained herein is from data available at the time of printing. Photos and renderings may show optional features. 12/2018