



***Introducing ...***

**The Lake Country Series**  
*18' Wide Single Section Homes*

*... our **WIDEST** single section homes!*

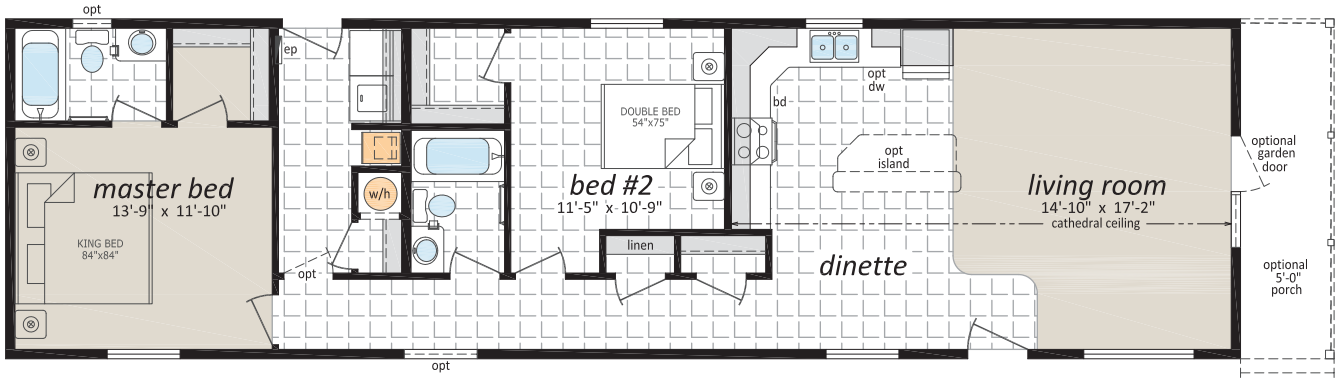


# The Lake Country Series

## 18' Wide Single Section Homes

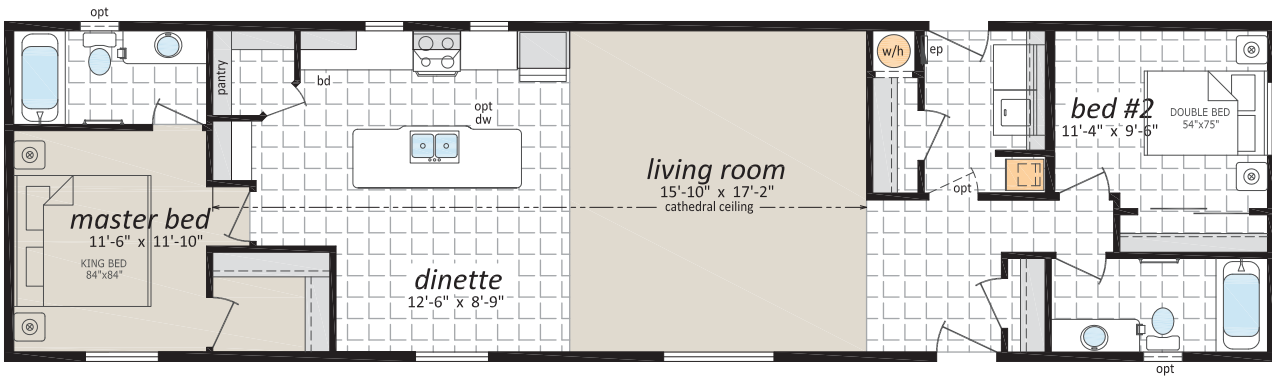
### LC-18661 "The Carlton"

18'-2" x 66', 1199 sq. ft.



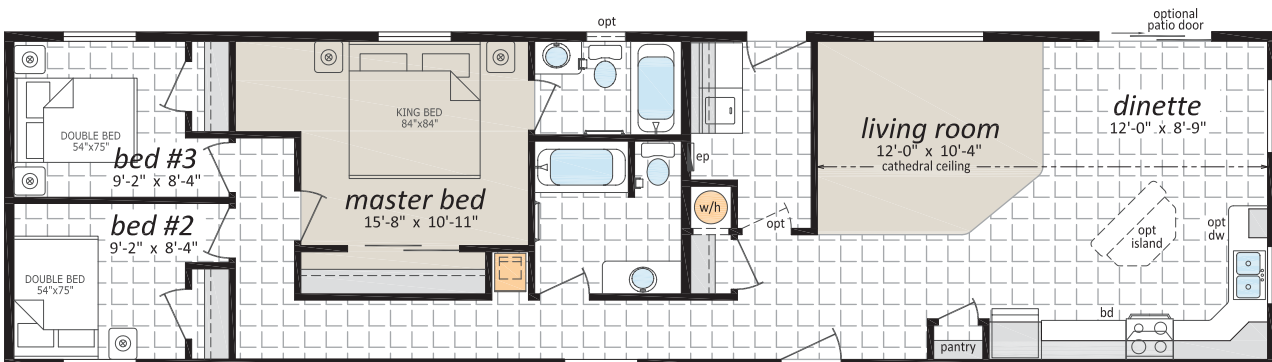
### LC-18681 "The Ashford"

18'-2" x 68', 1236 sq. ft.



### LC-18682 "The Regina"

18'-2" x 68', 1236 sq. ft.

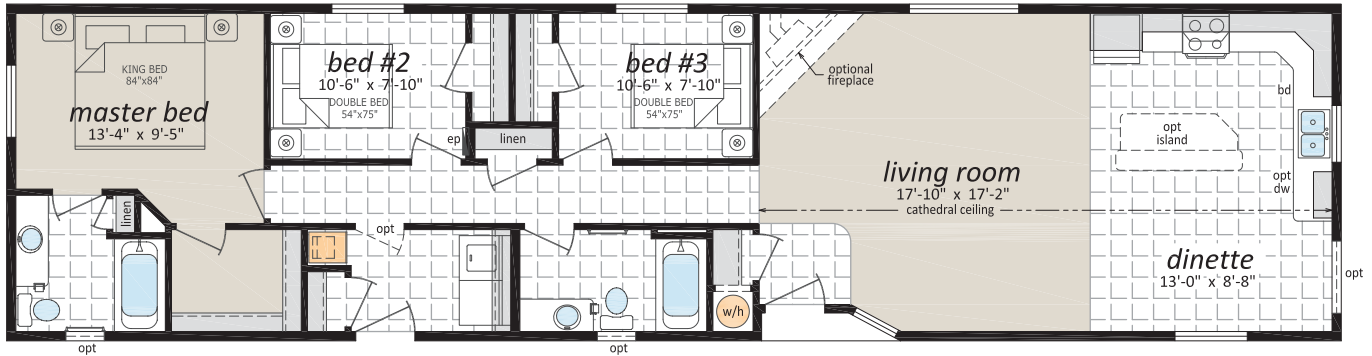


# The Lake Country Series

## 18' Wide Single Section Homes

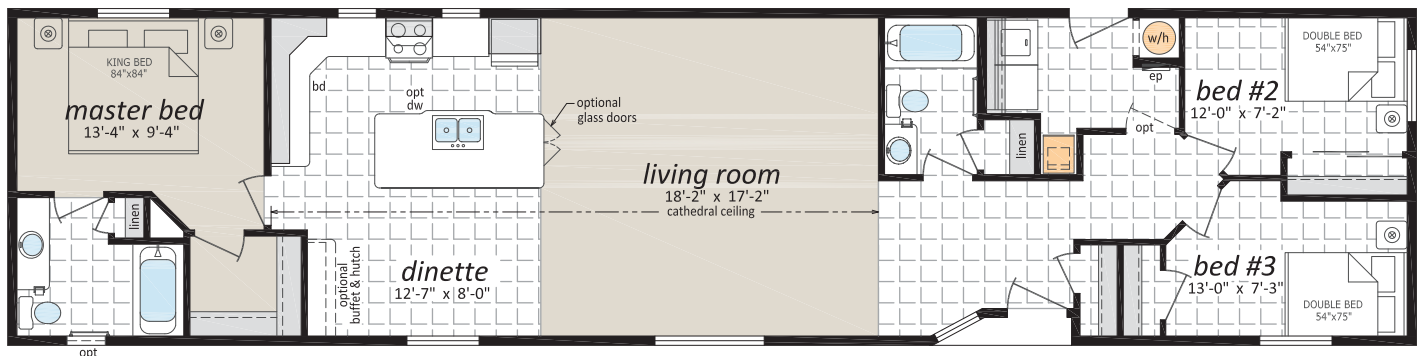
### LC-18721 "The Chelsea"

18'-2" x 72', 1308 sq. ft.



### LC-18761 "The Ritz"

18'-2" x 76', 1381 sq. ft.

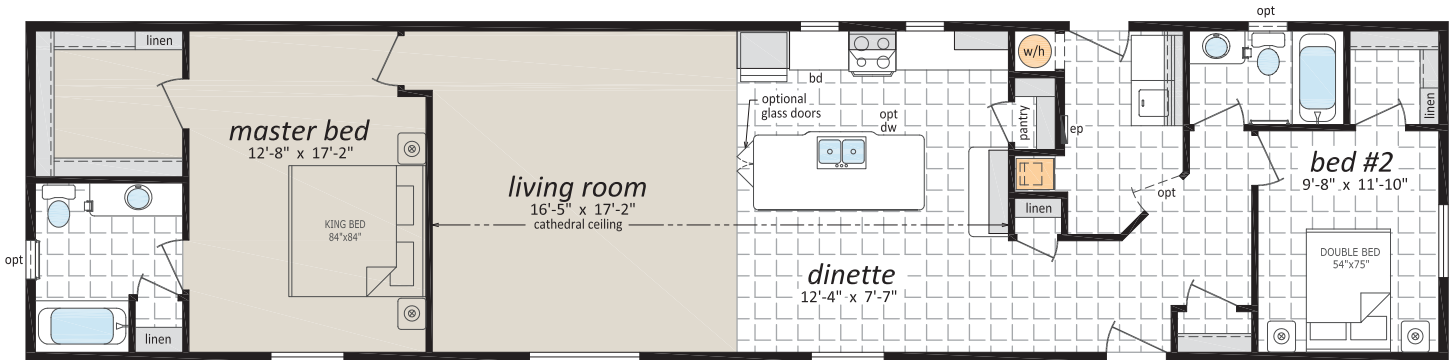


# The Lake Country Series

## 18' Wide Single Section Homes

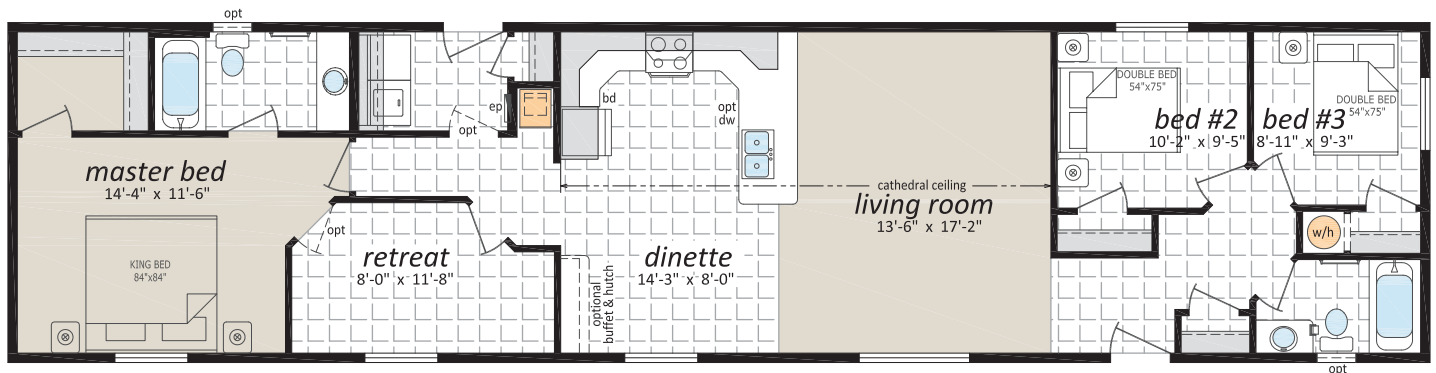
### LC-18762 "The Biltmore"

18'-2" x 76', 1381 sq. ft.



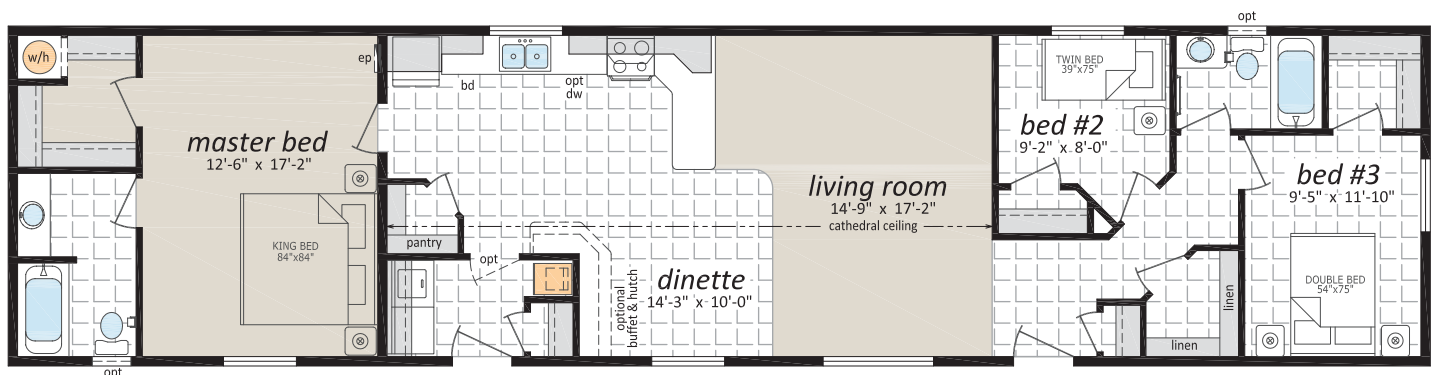
### LC-18763 "The Regis"

18'-2" x 76', 1381 sq. ft.



### LC-18764 "The Stafford"

18'-2" x 76', 1,381 sq. ft.



# The Lake Country Series

## 18' Wide Single Section Homes

### Standards and Specifications

#### Exterior

- ◆ 30 Year Fiberglass Shingle Roof
- ◆ R-33 Attic Insulation
- ◆ Perimeter Eave Venting System
- ◆ 42 psf Roof Design Load
- ◆ Nominal 3/12 Roof Pitch with 9" Eaves
- ◆ 15/32" Roof Sheathing
- ◆ Maintenance Free Vinyl Siding and Trim
- ◆ Coach Lights at all Exterior Doors
- ◆ 6-Panel Insulated Exterior Doors
- ◆ Low E & Argon Gas Thermal Pane PVC Windows with Screen and Safety Latch
- ◆ Residential 8' Walls
- ◆ 2x6 Exterior Walls @ 24" o.c. with 3 Belt Rails and R-22 Insulation
- ◆ 2x12 Floor Joists with R33 Insulation
- ◆ 19/32" T&G Floor Sheathing - Screwed & Glued
- ◆ Weather-Proof Exterior G.F.I. Receptacle
- ◆ Frost Free Exterior Tap
- ◆ Poly Vapour Barrier

#### Interior

- ◆ Cathedral Ceilings in Living Room, Kitchen and Dinette
- ◆ Residential Textured Ceilings
- ◆ Flat-Panel White Interior Doors
- ◆ Carpet in LR & MBR
- ◆ Linoleum All Other Areas
- ◆ Shelving Over Washer/Dryer Area
- ◆ Designer Light Package
- ◆ Designer Hardware Package
- ◆ Vinyl Covered Gyproc Decorative Wall Panels
- ◆ 2" Blinds Throughout

#### Kitchen

- ◆ Exterior-Vented, two speed range hood with Light
- ◆ 18 Cu. Ft. 2- Door Frost Free Refrigerator
- ◆ 30" Easy Clean Electric Range
- ◆ Stainless Steel Double-Bowl Kitchen Sink
- ◆ Kitchen Faucet with Sprayer
- ◆ Modular PVC Cabinets with Designer Hardware
- ◆ Four Designer-selected Cabinet Choices
- ◆ Deep Cabinet over Refrigerator
- ◆ Bank of Drawers (4 drawers)
- ◆ Full Cabinet Doors on Lower
- ◆ 6" x 6" Ceramic Tile Backsplash

#### Bathroom

- ◆ One Piece Tub and Shower with Single-Lever Faucet
- ◆ Designer Light Fixture over Vanity
- ◆ Dual Handle Vanity Faucets
- ◆ Raised Toilet with Dual-Flush Control
- ◆ Curved Shower Rod /w Liner
- ◆ 4" x 4" Spa-white Tile Backsplash
- ◆ Exhaust Fan
- ◆ G.F.I. Protected Receptacle
- ◆ Privacy Lock

#### Utilities

- ◆ 100 Amp Electrical Panel
- ◆ 95 % High-Efficiency, A/C Ready, Natural Gas Furnace with Electronic Ignition
- ◆ Smoke/CO Detectors
- ◆ Plumbed and Wired for Washer and Dryer
- ◆ Wall mounted TV rough in, Living Room
- ◆ Heat Tape Receptacle
- ◆ 40 Gallon (IMP) Electric Water Heater
- ◆ Shut-off Valves at Plumbing Fixtures
- ◆ Built to CSA Z-240 Standard



10 YEAR  
  
**Pacific**  
HOME WARRANTY

# The Lake Country Series

## 18' Wide Single Section Homes



### Popular Optional Features

#### Exterior

- Hardie Siding
- Third Gables
- Painted Smart Start Fascia, Window and Door Trim
- Painted Smart Start Shutters
- Garden or Patio Doors
- Exterior Door with Victoria, 9 Lite, Harlow or Niagara Insert
- "Ladder" Grids in Windows
- Bay Windows
- Skylights
- Octagon Vents
- Electric Door Chimes
- Extra Exterior GFI
- Faux Rock or Shake Accents
- Solar Tubes

#### Interior

- Upgrade Trim Package
- White Painted Trim Upgrade
- Painted Drywall with Ceiling Cove Moulding
- Clermont White Raised Panel Doors
- Upgrade Lino
- Carpeting in 2nd and 3rd Bedrooms
- 2" Faux Wood Blinds
- French Doors
- Mirrored Bi-fold Closet Doors
- Utility Room Door with Grill
- Freezer Cabinets
- Laundry Cabinets
- Soak Sink with Cabinet
- Ceiling Fan with Lights
- Recessed Pot Lights
- Gas Fireplace with Fan and Mantle
- Electric Fireplace with Mantle
- LED Light Disk



Authorized Retailer:

#### Kitchen

- Natural Wood Cabinet Doors
- Island Work Centre
- Upgrade High Definition Counter Laminate
- Upgrade High Definition Bevelled Counter Edging
- Wood Reveal Counter Edging
- Appliance Garage
- Multi Row Tile Backsplash with mosaic
- Pullout Trash and Recycle bins
- Pantry Cabinets
- Additional Bank of Drawers
- Planning Centre
- Lazy Susan
- Black Sink
- Upgrade Moen Faucets
- Built-In Dishwasher
- Combination Microwave/Range Hood
- Eye Level Oven with Cook Top
- Ceramic Top Self Cleaning Range
- Two Door Side by Side Refrigerator (with water and ice maker)
- Stainless Appliances
- Stainless Steel Canopy Range Hood

#### Bathroom

- Oval Tub or Corner Oval Tub
- Jetted Spa Option (available on any tub)
- 2 Person Jetted Tub
- 36", 48" or 60" Shower Stall
- Low Barrier Shower
- Grab Bars
- Assorted Medicine Cabinets

#### Utilities

- On Demand Water Heater
- 40 Gallon U.S. Gas Water Heater
- Baseboard Heating
- Forced Air Electric Furnace
- Heat Recovery Ventilation Unit
- Stacking Washer and Dryer
- Front Loading Washer and Dryer
- Central Vacuum System
- Roughed in for Central Vacuum
- 200 Amp Service Panel
- Extra Telephone /Cable Box(es)
- Pre-wire for Telephone and/or Cable



This is not a fully detailed specification. SRI Kelowna reserves the right to change specifications, designs, materials and suppliers without notice and without incurring obligation. Information contained herein is from data available at the time of printing. Square footage and dimensions are approximate. Furniture placement shown is for suggestion only. Photos and renderings may show optional features. 12/2018