

Proudly made in  
**Canada**  
to Canadian  
Standards

# The Modular Home Series



**SRI**  
Kelowna

# The Modular Home Series



... is an acronym for “Shelter Regent Industries” and began in 1978 with a factory located in Estevan, Saskatchewan. The second factory, in Lethbridge, Alberta, became part of SRI in 1985. The newcomer, the Kelowna factory, began producing homes in 1992.

SRI has built over **40,000** homes for all types of Canadian families since its beginning over 39 years ago.



## It's all about design...

You can **customize** your floor plan, you can choose your décor. Do you need a large eat-in kitchen and island workspace for many chefs? ...or a quiet Master Bedroom **retreat**, generous walk-in closet and **spa-like** ensuite? Add the options that will make it **personal** so that it works for you and all your family members.

## Let's get started...

The Modular Home Series offers a full range of floor plans in both 27' and 30' wide homes, in **Rancher** (Self-Contained Crawlspace) or **Split Entry** home styles. Sizes range from a **cozy** 1,188 sq. ft. to a **spacious** 1,782 sq. ft. Many models are designed to work with attached garages or back yard decks for easy outdoor entertaining.



You choose the **home**  
that fits your **lifestyle**.

and **SRI** will build your  
**dream home**  
for you.



## Standards and Specifications

### Exterior

- Maintenance-Free Vinyl Siding
- Architectural Fibreglass Shingles
- 5/12 roof pitch w/ R54 Insulation
- Coloured Aluminum Fascia
- Coach Lights at all Exterior Doors
- 6-Panel Insulated Exterior Doors
- Low E/Argon Energy Efficient Windows with Screens & Security Latches
- 2x6 Exterior Walls @ 24" o.c. with R22 Insulation
- Modular House Wrap
- 23/32" OSB T&G Floor - Screwed and Glued
- Engineered Floor System (with R33 Insulation in Crawlspace Models)
- Exterior G.F.I. Receptacle
- Frost Free Tap

### Kitchen

- Rangehood with Two Speeds and Light, Vented to Exterior
- Stainless-Steel Kitchen Sink
- Single-Lever Faucet /w Sprayer
- Modular PVC Cabinets & Designer Hardware
- Raised Corner Upper Cabinet with Glass Accent (Most Models)
- Extended-Sink Cabinet & Countertop (Most Models)
- Raised Deep Cabinet over Refrigerator
- Adjustable Shelves in Uppers
- Bank of Drawers (4 drawers)
- Pots & Pan Drawers (3 drawers)
- Crown Moulding
- 6" x 6" Tile Backsplash

### Bathroom

- One Piece Tub and Shower w/ Single-Lever Faucet
- Dual Handle Vanity Faucets
- Designer Light Fixture over Vanity
- Curved Shower Rod /w Liner
- 4" x 4" Spa-white Tile Backsplash
- Exhaust Fan in Bathroom
- G.F.I. Protected Receptacle in Bathroom
- Privacy Locks

### Interior

- 8' High Ceilings
- Textured Ceilings
- Craftsman Square-edge White Interior Trim
- Cove Ceiling Moulding
- Painted Drywall with Rounded Corners
- "Clermont" White Passage Doors
- Lever Handles on all Doors
- Bi-fold Closet Doors
- Carpet in LR, DR, All BR's, Hall & Den/Family Room
- Linoleum Elsewhere
- Designer Light & Hardware Package
- Privacy Locks on Bath & MBR
- Decora Switches & Receptacles

### Utilities

- 40 Gallon (Imp) Electric Water Heater (Crawlspace Homes)
- High-Efficiency A/C Ready Natural Gas Furnace with Electronic Ignition (Crawlspace Homes)
- Whole House Ventilation System
- Combination Carbon Monoxide/Smoke Detectors
- Plumbed/Wired for Washer and Dryer (Crawlspace Homes)
- Built to Applicable Provincial Codes

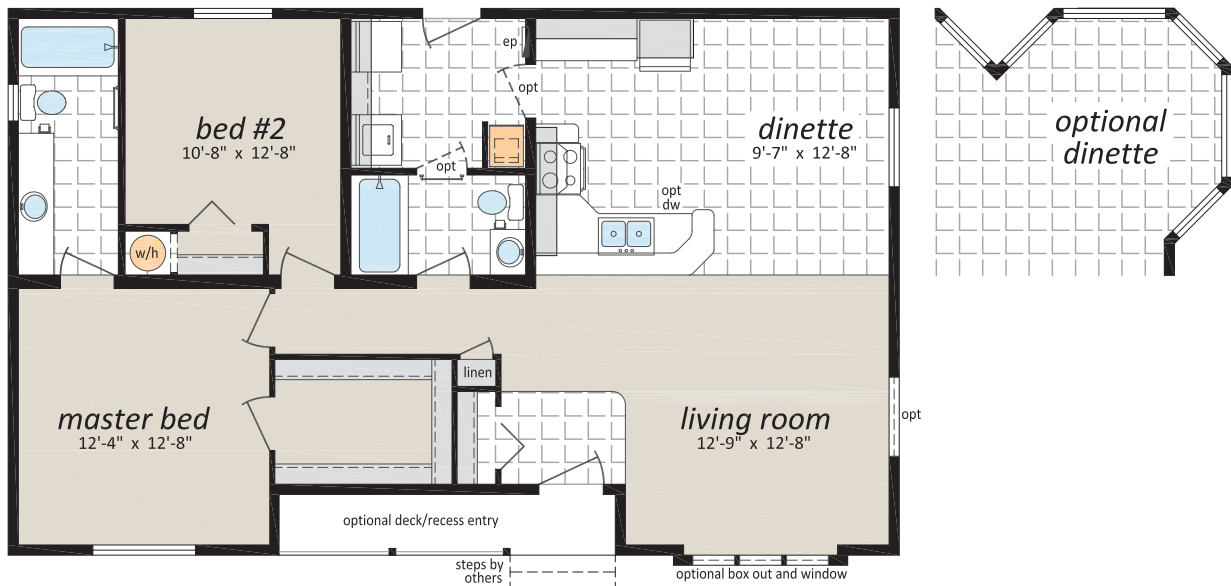




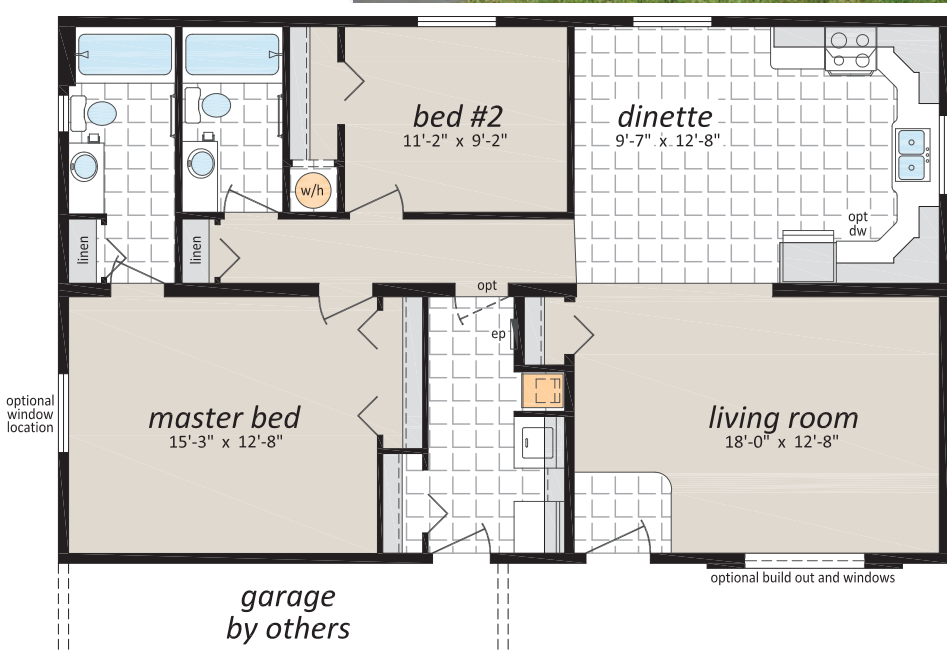
**The Kimberley**  
 CDF-202  
 27' x 44' • 1,188 sq. ft.



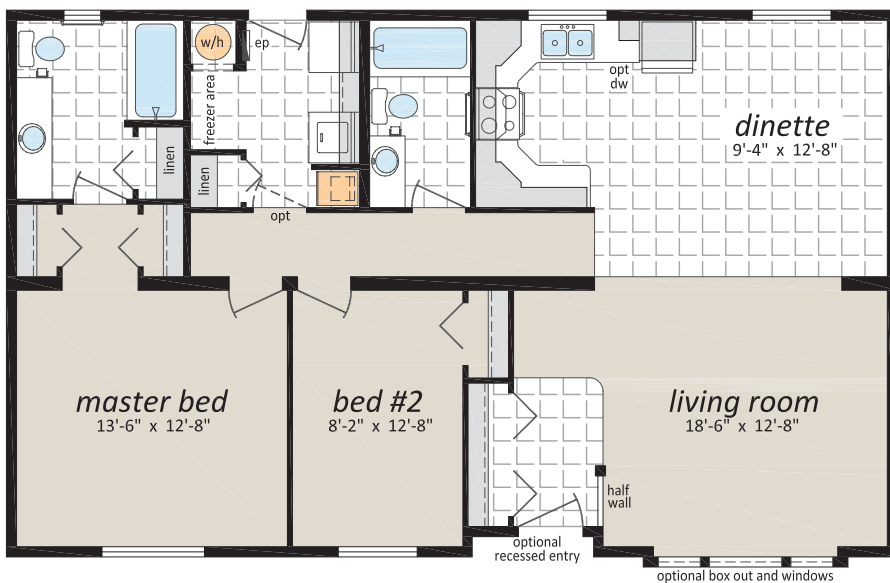
**The Ganges**  
 CDF-208  
 27' x 44' • 1,188 sq. ft.



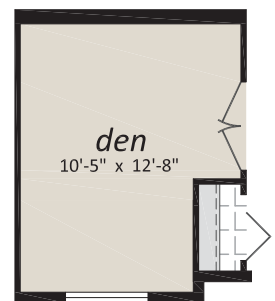
**The Montrose**  
 CDF-244  
 27' x 44' • 1,188 sq. ft.



**The Kitimat**  
 CDF-290  
 27' x 44' • 1,188 sq. ft.



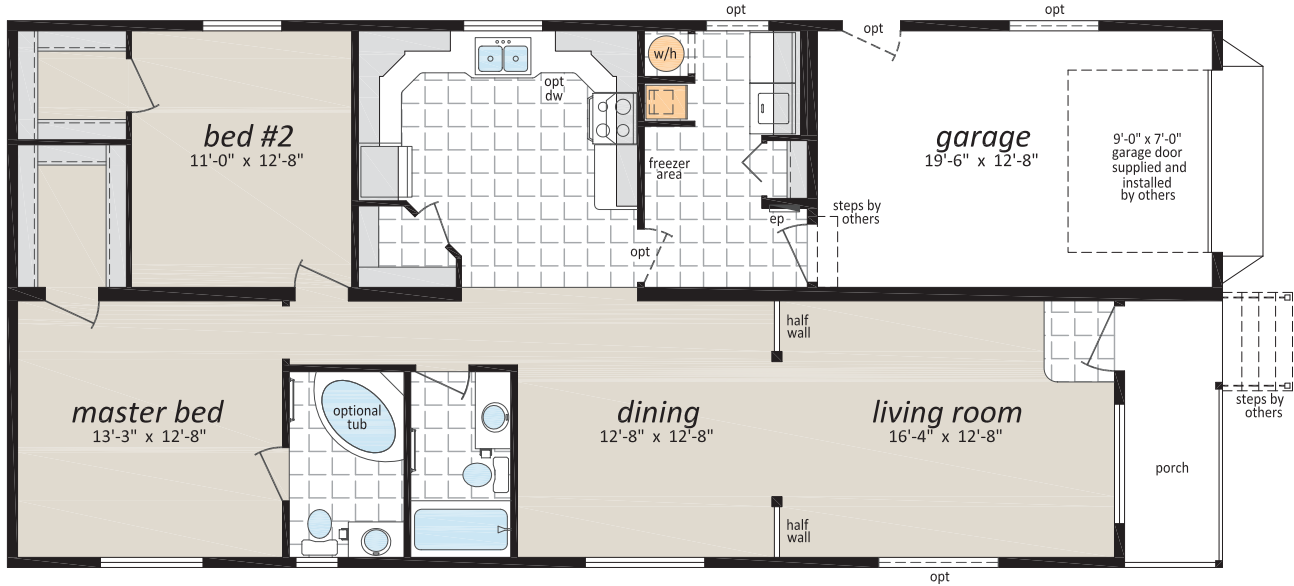
Optional Den  
 (in lieu of bed #2)



**The Cherryville**

CDF-295

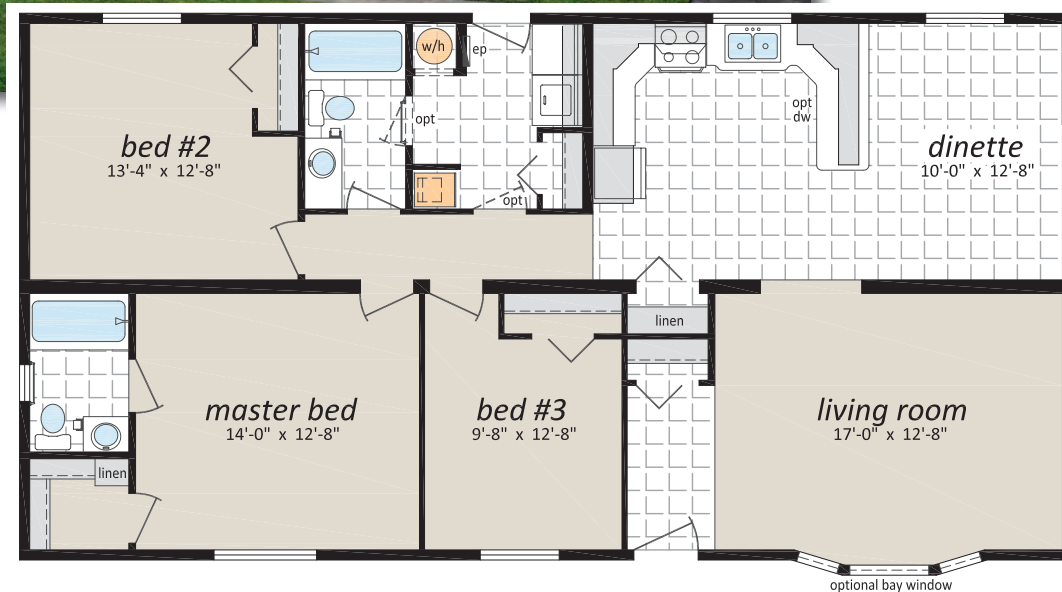
27' x 40'/55' • 1,283 sq. ft.



**The Wyndell**

CDF-265

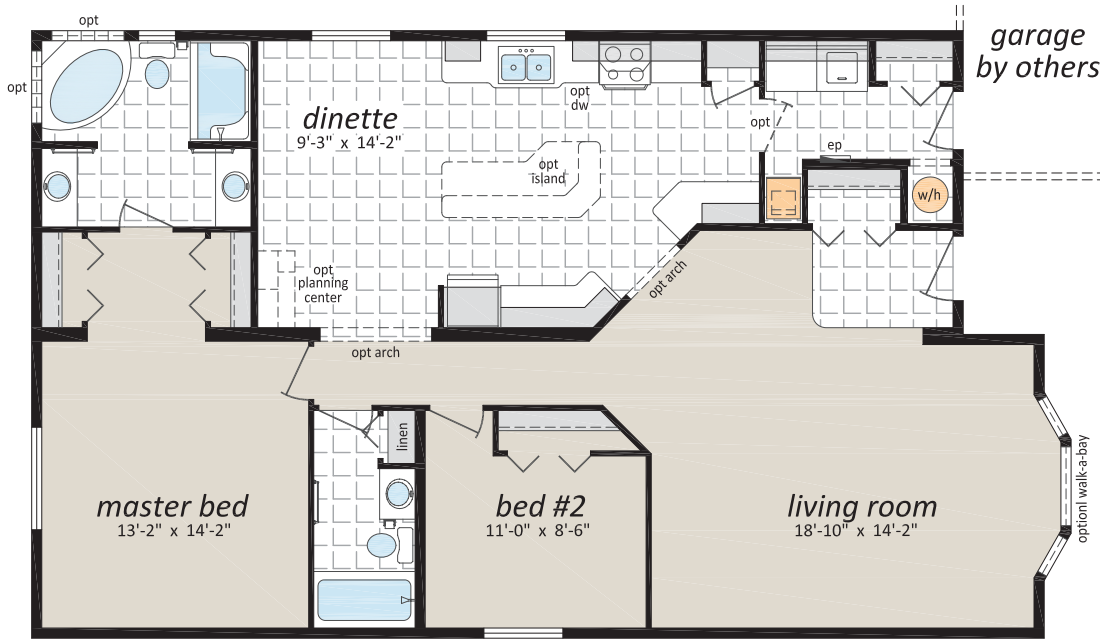
27' x 52' • 1,404 sq. ft.



Optional  
Dinette  
Windows

**30' Wide Floorplan**  
 for limited areas of BC  
 (please check with your SRI retailer)

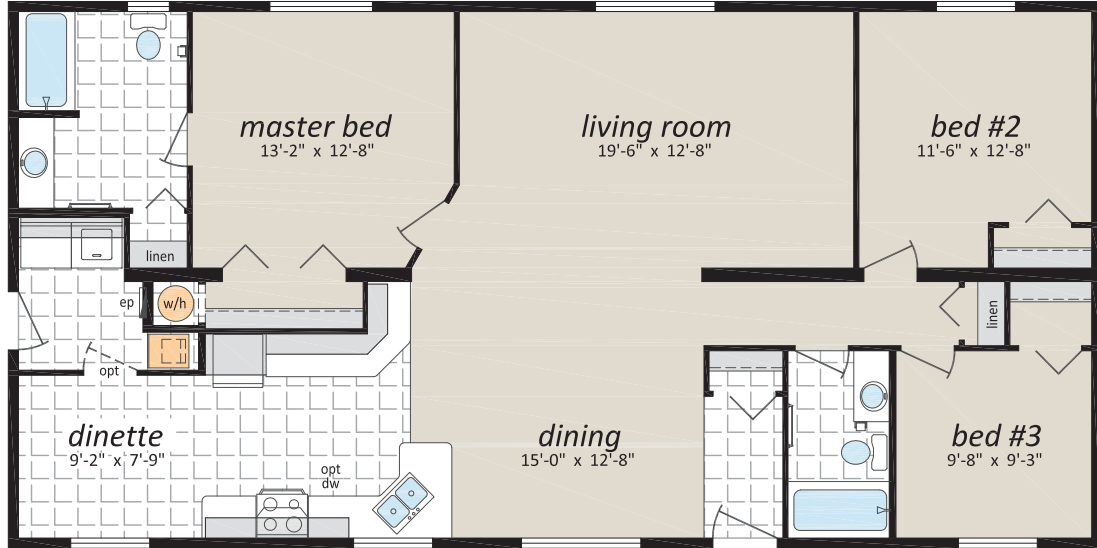
**The Tulameen**  
**CDF-305**  
 30' x 46'/50' • 1,440 sq. ft.



**The Langley**  
**CDF-225**  
 27' x 52' • 1,404 sq. ft.



**The Richmond**  
 CDF-280  
 27' x 54' • 1,458 sq. ft.



**The Millwood**  
 CDF-211  
 27' x 56' • 1,512 sq. ft.

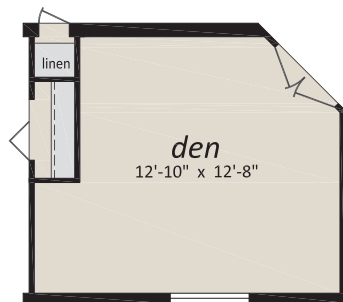




**The Celista**

CDF-296

27' x 58' • 1,566 sq. ft.

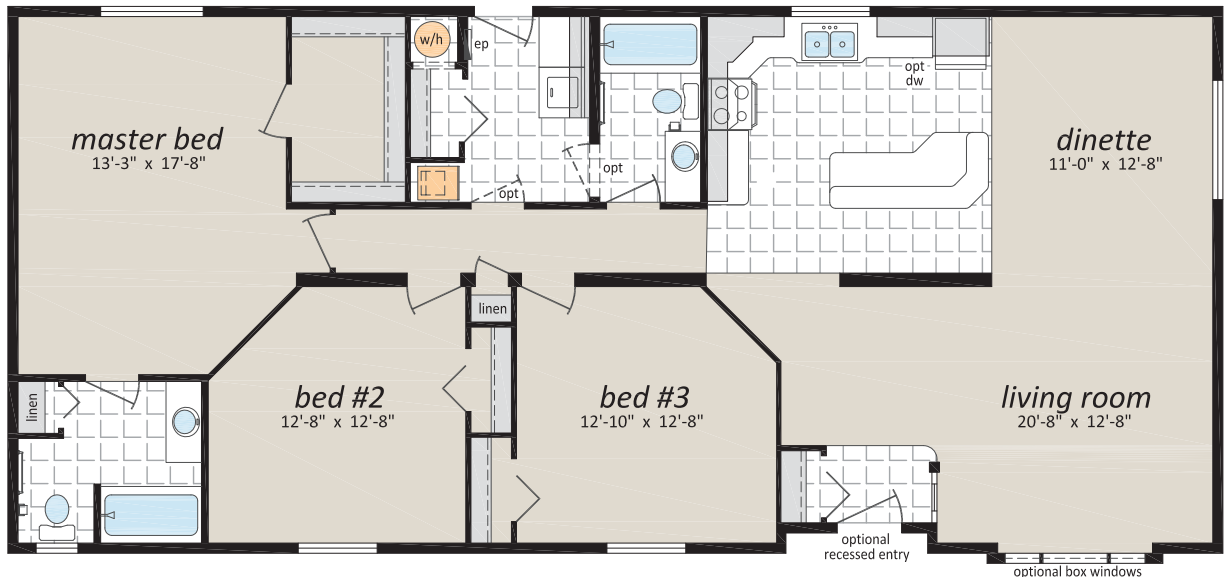


**The Vernon**

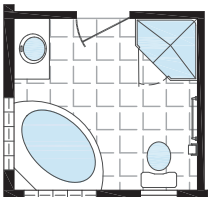
CDF-240

27' x 60' • 1,620 sq. ft.

Optional Den  
 (in lieu of bed #3)



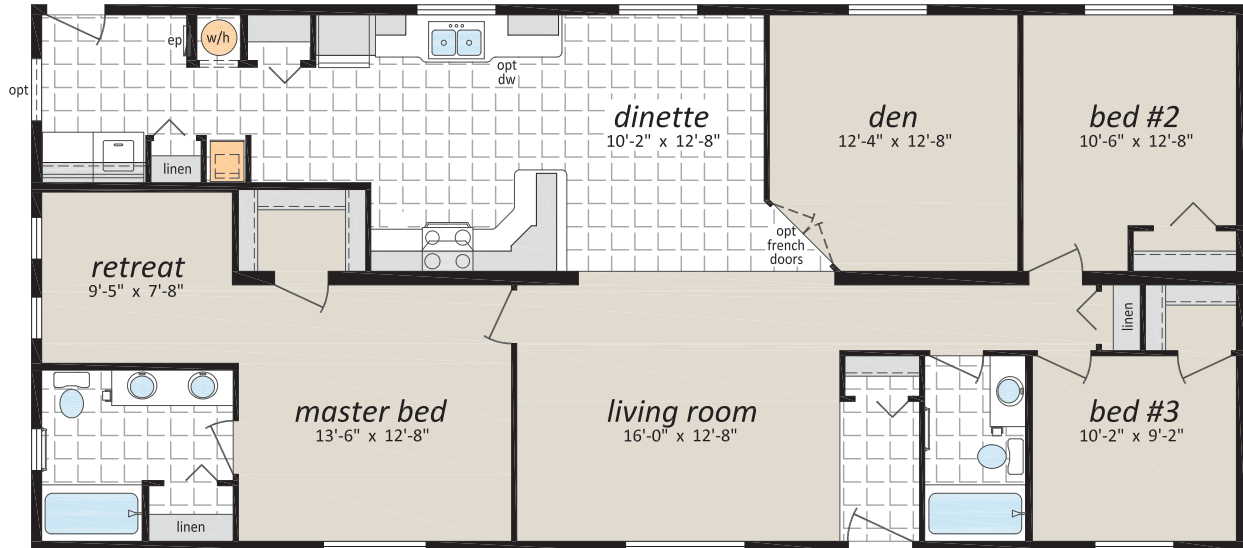
Optional  
 Ensuite



**The Saturna**

CDF-241

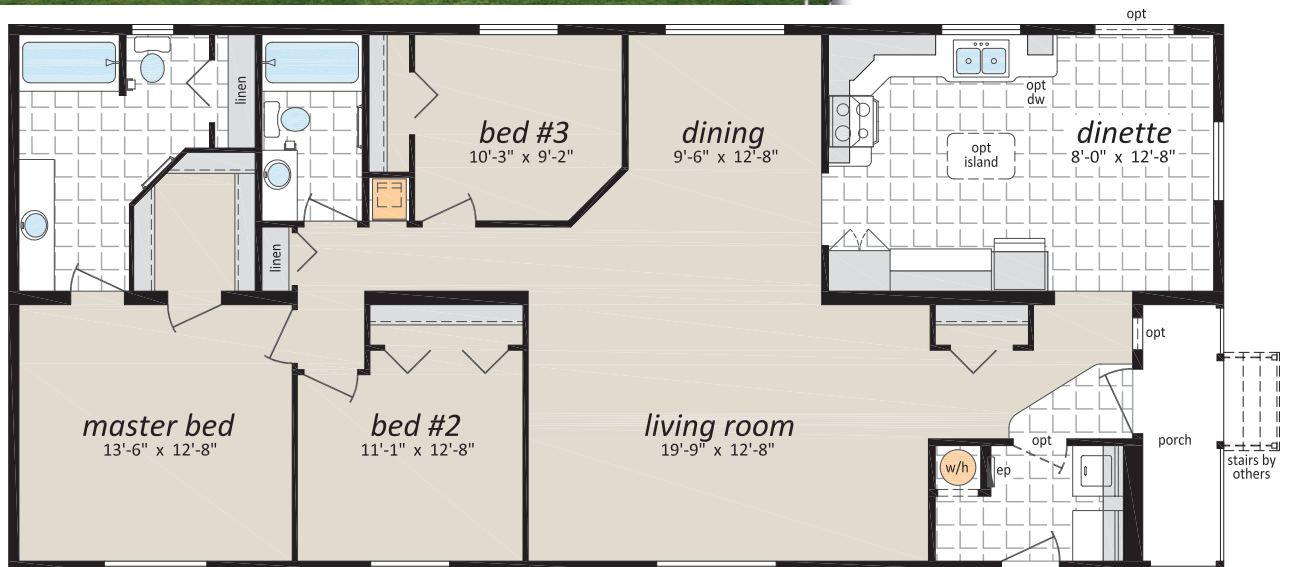
27' x 60' • 1,620 sq. ft.



**The Falkland**

CDF-245

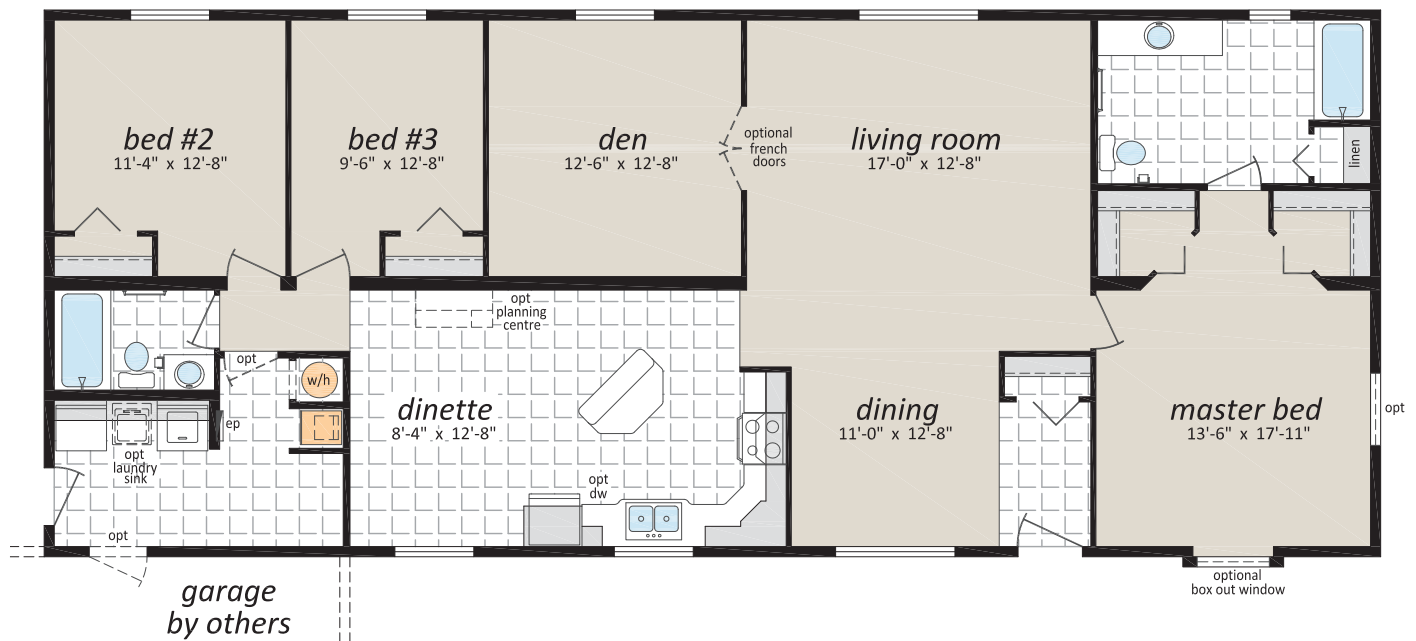
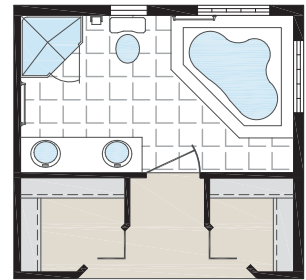
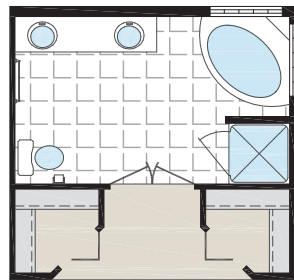
27' x 60' • 1,620 sq. ft.





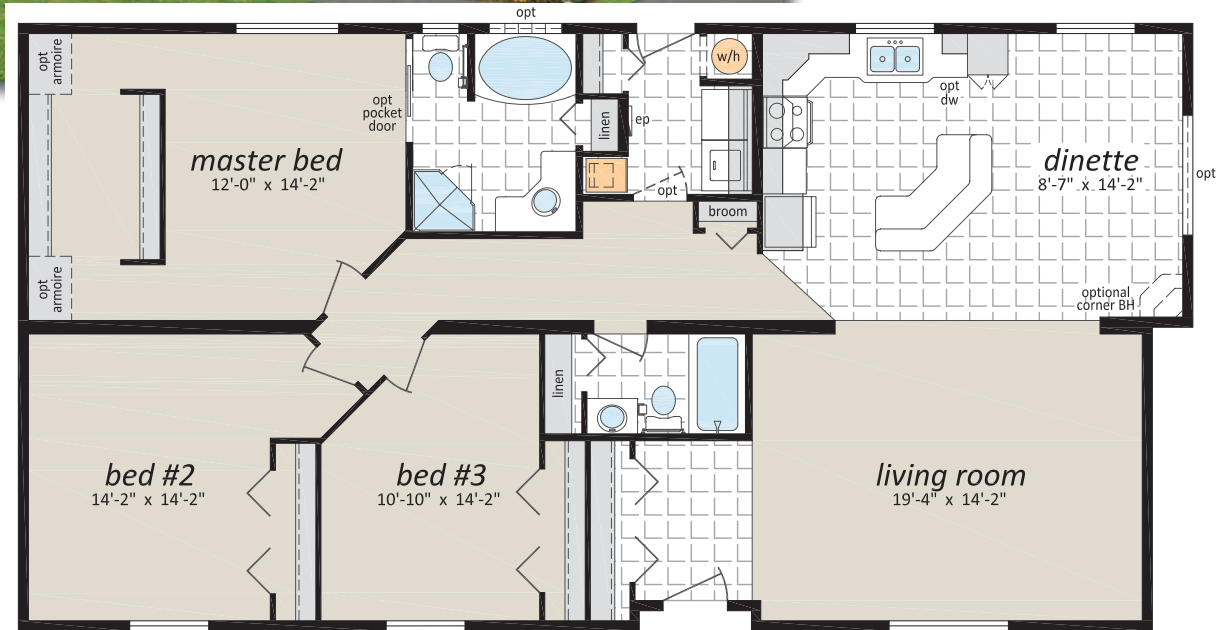
**The Waterville**  
**CDF-252**  
 27' x 66' • 1,782 sq. ft.

Optional  
 Ensuities

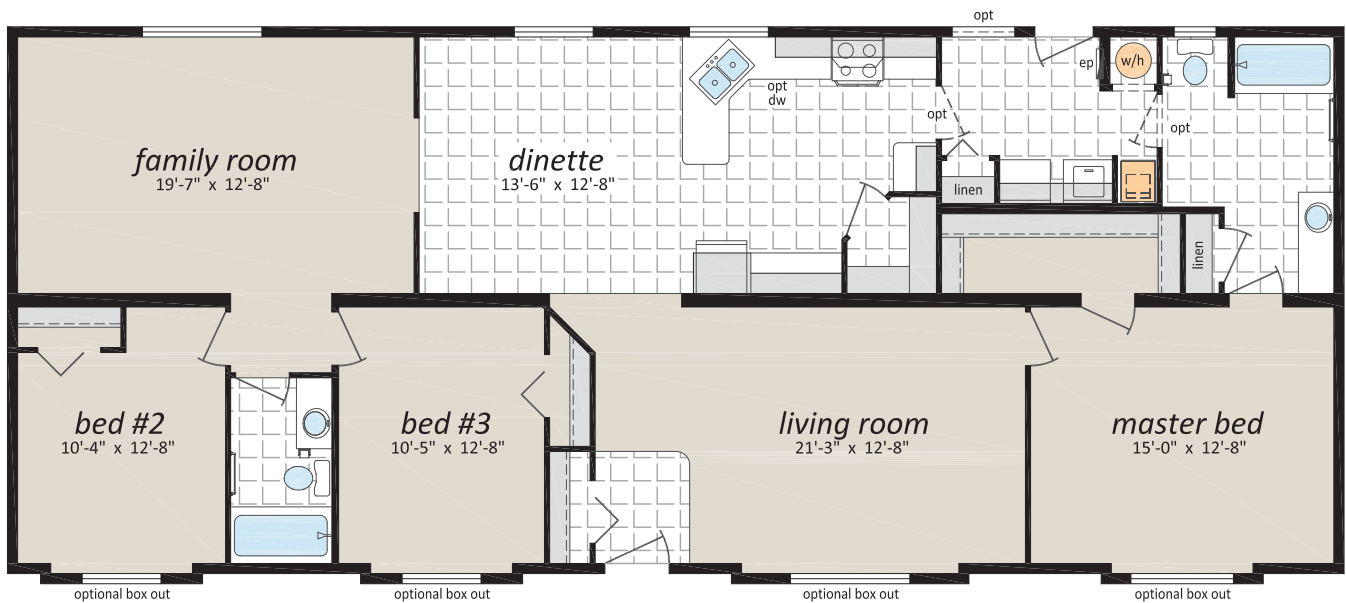




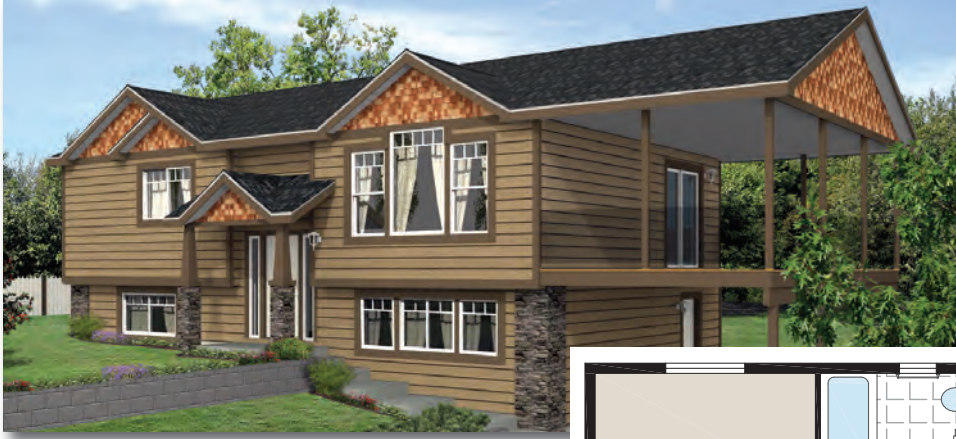
**The Jaffray**  
**CDF-300**  
 30' x 58'/56' • 1,710 sq. ft.



**The Thetis**  
**CDF-253**  
 27' x 66' • 1,782 sq. ft.



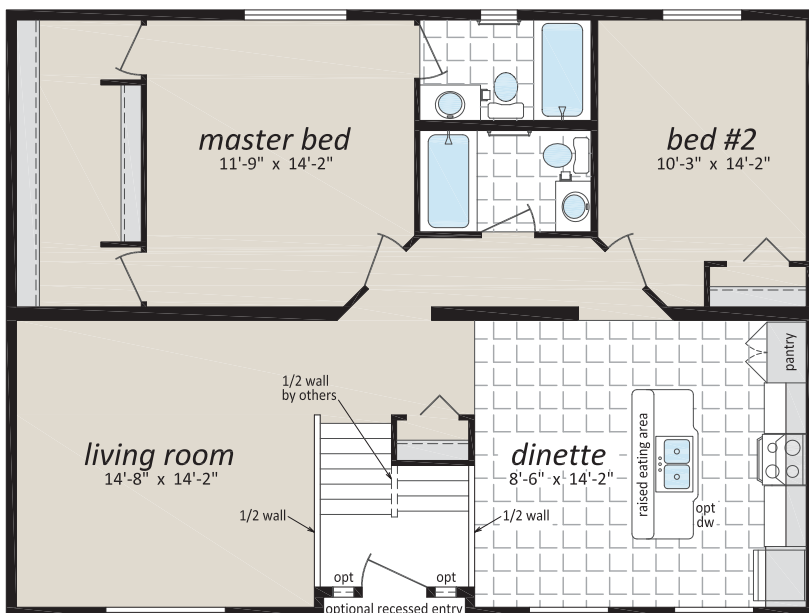
# Split Entry Homes



**The Wenatchee**  
**CDF-230**  
 27' x 40' • 1,080 sq. ft.



**The Cedarville**  
**CDF-310**  
 30' x 40' • 1,200 sq. ft.



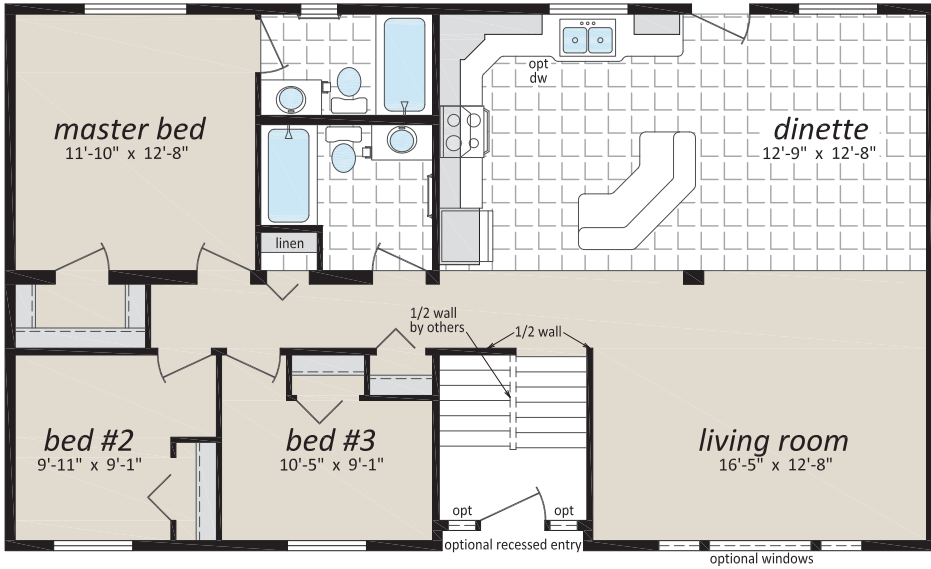
**30' Wide Floorplan**  
 for limited areas of BC  
 (please check with your SRI retailer)

# Split Entry Homes

## The Long Beach

CDF-236

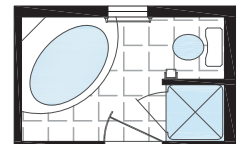
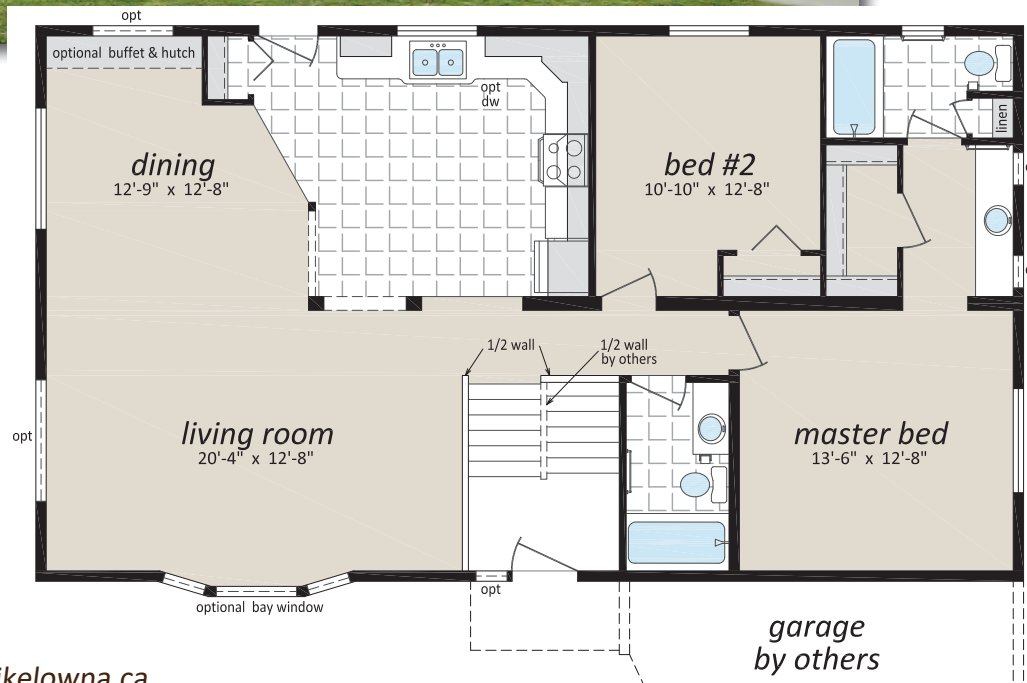
27' x 46' • 1,242 sq. ft.



## The Chemainus

CDF-201

27' x 48' • 1,296 sq. ft.

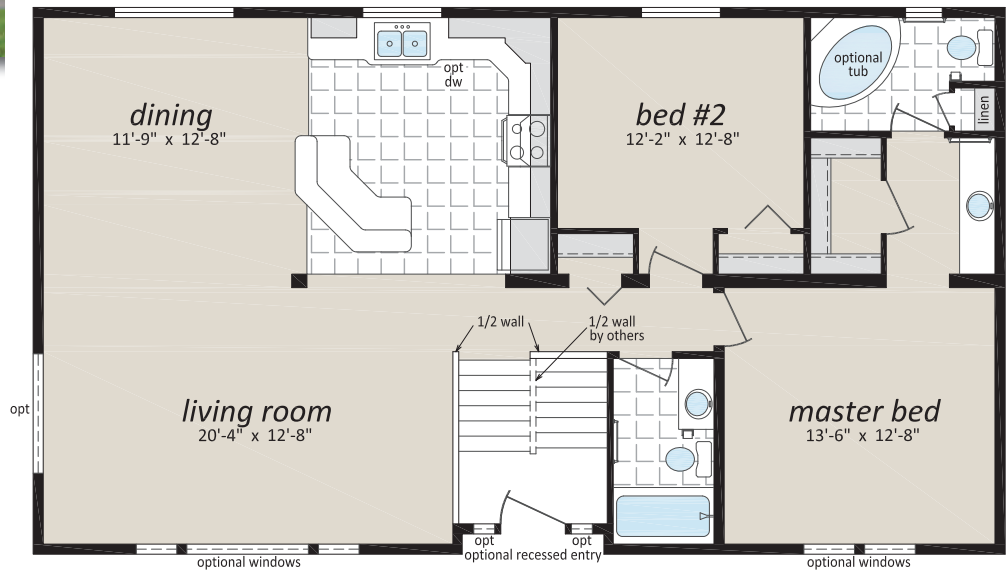


Optional  
Ensuite

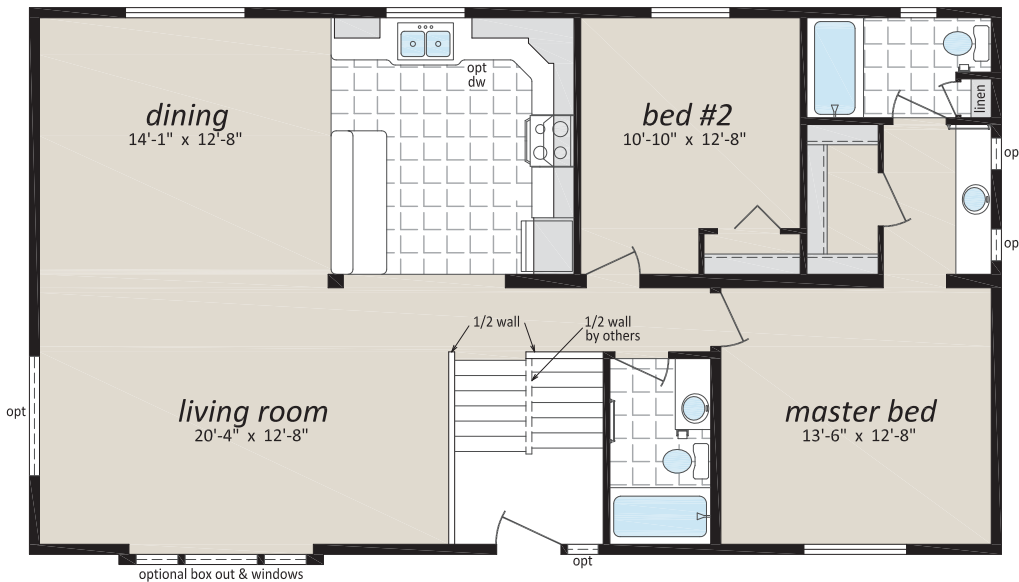
# Split Entry Homes



**The Drummond**  
**CDF-203**  
 27' x 48' • 1,296 sq. ft.



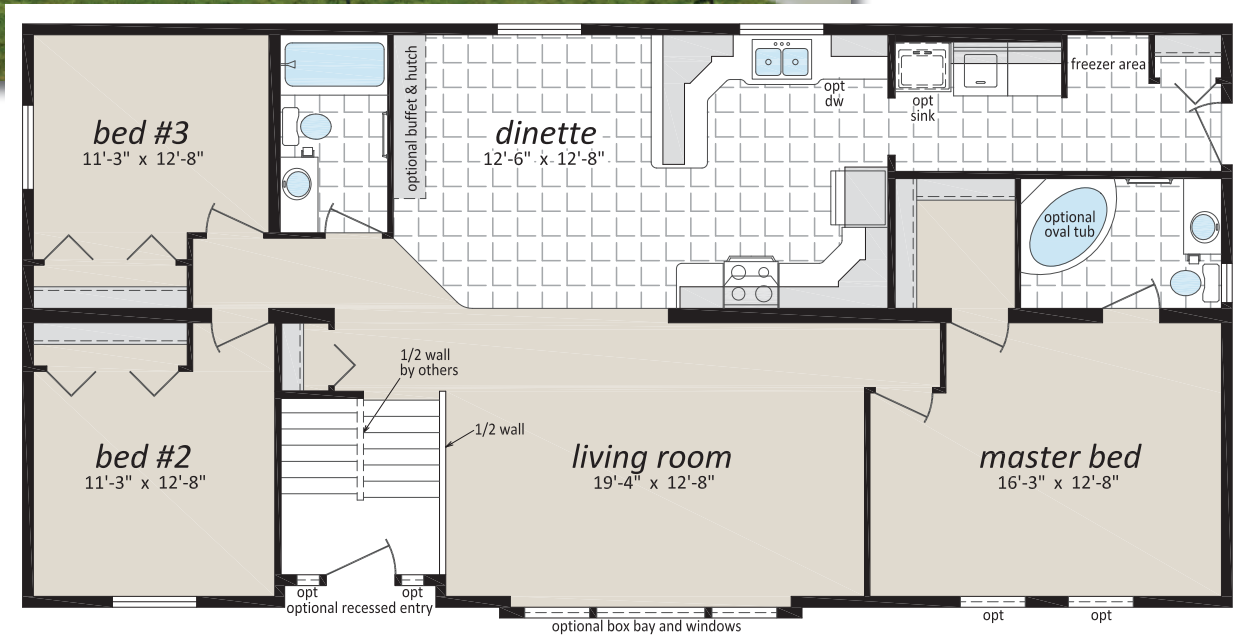
**The Victoria**  
**CDF-204**  
 27' x 48' • 1,296 sq. ft.



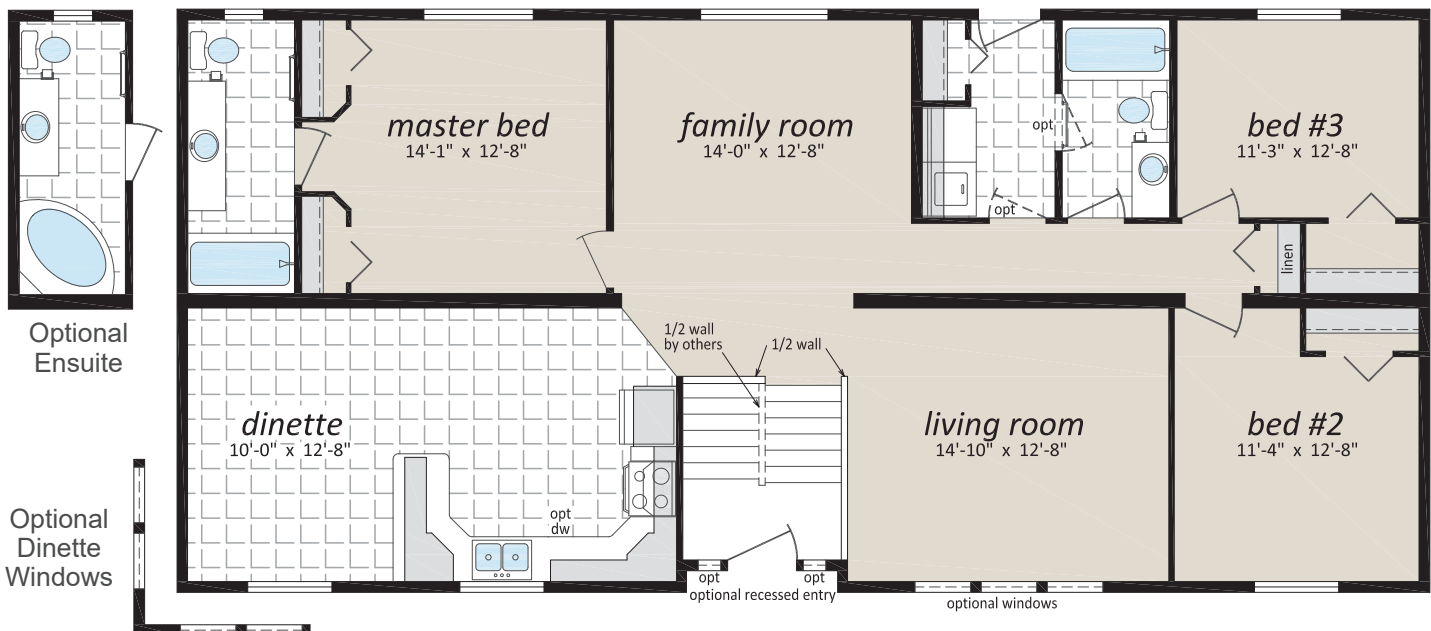
# Split Entry Homes



**The Alexandria**  
**CDF-220**  
 27' x 56' • 1,512 sq. ft.



**The Mackenzie**  
**CDF-215**  
 27' x 58' • 1,566 sq. ft.





# Split Entry Homes



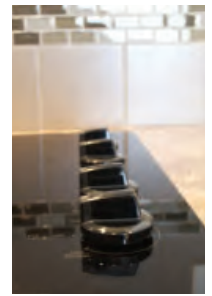
## The Quatsino

CDF-260

27' x 64' • 1,728 sq. ft.







## Popular Optional Features

### Exterior

- Hardie Siding
- Third Gables
- Painted "Smart Start" Fascia, Window and Door Trim
- Painted Smart Start Shutters
- Garden or Patio Doors
- Exterior Door with Victoria, 9 Lite, Harlow or Niagara Insert
- Ladder" Grids in Windows
- Transom Windows
- Bay Windows, Skylights & Solar Tubes
- Octagon Vents
- Electric Door Chimes
- Extra Exterior GFI
- Faux Rock or Shake Accents

### Interior

- Painted Drywall with Ceiling Cove Moulding
- Clermont White Raised Panel Doors
- Upgrade Vinyl Flooring
- Carpeting in Additional Bedrooms
- 2" Faux Wood Blinds
- French Doors
- Mirrored Bi-fold Closet Doors
- Utility Room Door with Grill
- Freezer and Laundry Cabinets
- Soak Sink with Cabinet
- Ceiling Fan with Lights
- Recessed Pot Lights
- LED Light Disk
- Electric Fireplace with Mantle
- Gas Fireplace with Fan and Mantle

### Kitchen

- Natural Wood Cabinet Doors
- Island Work Centre
- Upgrade High Definition Counter Laminate
- Upgrade High Definition Bevelled Counter Edging
- Wood Reveal Counter Edging
- Appliance Garage
- Multi Row Tile Backsplash with mosaic
- Pullout Trash and Recycle bins
- Pantry Cabinets
- Additional Bank of Drawers
- Planning Centre
- Lazy Susan
- Black Sink
- Upgrade Moen Faucets
- Built-In Dishwasher
- Combination Microwave/Range Hood
- Stainless Steel Canopy Range Hood
- Eye Level Oven with Cook Top
- Gas or Ceramic Top Self Cleaning Range
- Two Door Side by Side Refrigerator (with water and ice maker) or Bottom Freezer
- Stainless Appliances

### Bathroom

- Oval Tub or Corner Oval Tub
- Jetted Spa Option (available on any tub)
- 2 Person Jetted Spa Tub
- 36", 48" or 60" Shower Stall
- Low-Barrier Shower
- Grab Bars
- Assorted Medicine Cabinets
- Low-Barrier Shower

### Utilities

- On Demand Water Heater
- 40 Gallon U.S. Gas Water Heater
- Baseboard Heating
- Forced Air Electric Furnace
- Heat Recovery Ventilation Unit
- Stacking Washer and Dryer
- Front Loading Washer and Dryer
- Central Vacuum system and/or Roughed in
- 200 Amp Service Panel
- Extra Telephone /Cable Box(es)
- Pre-wire for Telephone and/or Cable



## Did you know?

SRI homes are built indoors, never exposed to the outdoor elements, and we continually inspect our homes to ensure our rigorous construction standards are met. We use quality, brand-name building materials, fixtures and appliances in every home we build.



Authorized Retailer:



This is not a fully detailed specification. SRI Kelowna reserves the right to change specifications, designs, materials and suppliers without notice and without incurring obligation. Information contained herein is from data available at the time of printing. Photos and renderings may show optional features. 01/2019