



The Sterling Series

35' Wide Sectional Homes



Scan with mobile device
to view brochure online.



Standards and Specifications

Exterior

- Maintenance-Free Vinyl Siding
- Painted Smartstart Window Trim
- Vinyl Corners to Match Siding
- Coloured Aluminum Fascia
- Recessed Front Entry
- Living Room Window Built-out Feature
- Residential 8' Sidewalls
- 2 x 6 Exterior Walls @ 24" OC w/ 3 Belt Rails & R-22 Insulation
- 4/12 Fixed Roof Pitch c/w 2 Knee Walls
- 24" Fixed Eaves
- Architectural Fiberglass Shingles
- R-33 Attic Insulation
- Coach Lights at Exterior Doors
- 6 Panel Insulated Exterior Doors
- Low E & Argon Gas Thermal-Pane PVC Windows w/ Screen & Safety Latch
- 19/32" T&G Floor Sheathing - Screwed & Glued
- 2x12 Floor Joists w/ R33 Insulation
- Exterior G.F.I. Receptacle
- Frost-Free Exterior Tap
- Heat Tape Receptacle

Kitchen

- Rangehood Vented to Exterior
- Stainless-Steel Kitchen Sink
- Single-Lever Faucet w/ Sprayer
- Pot and Pan Drawers (*3 drawers*)
- Bank of Drawers (*4 drawers*)
- Bank of Drawers (*4 drawers*)
- Raised Corner Upper Cabinet w/ Glass Accent (*Most Models*)
- Extended-Sink Cabinet (*Most Models*)
- Extended Counter Overhang (*Most Models*)
- Raised, Deep Cabinet over Refrigerator
- PVC & TFL Cabinet Colour Choices
- Pantry Cabinet or Walk-In Pantry (*Most Models*)
- Kitchen Island (*Most Models*)
- 18 Cu. Ft., 2-Door, Frost-Free Refrigerator
- 30" Easy-Clean Electric Range
- Plumbed & Wired for Dishwasher c/w Cabinet
- Ceramic Tile Backsplash - 2 rows of 3"x6"

Interior

- Cathedral Ceiling in Kitchen, Dining & Living Room
- Flat-Panel White Interior Doors
- White Cove Ceiling Moulding
- Lever Handles on All Doors
- Carpet in Living Room, Master Bedroom & Hall
- Quality Vinyl Flooring in all Other Areas
- Designer Light Package
- Décora Switches & Receptacles
- 3 Way Switch in Hall & Utility Room
- Dual Closet Rods & Shelf in MBR Walk-in Closet
- Drapery Side Panels in Living Room
- Cellular Shades Throughout

Bathroom

- One-Piece Tub & Shower w/ Single-Lever Faucet
- Dual Handle Vanity Faucets
- Designer Light Fixture above Vanity
- Drawer(s) over Vanity Cabinet Doors (*Most Models*)
- Framed Vanity Mirror
- Raised Toilet w/ Dual-Flush Control
- Curved Shower Rod with Liner
- 2 rows of 3"x6" Tile Backsplash
- Exhaust Fan
- G.F.I. Protected Receptacle(s)
- Privacy Locks

Utilities

- 40 Gallon (*IMP*) Electric Water Heater
- 95% High-Efficiency A/C Ready Natural Gas Furnace w/ Electronic Ignition
- Smoke/Carbon Monoxide Detectors
- Plumbed & Wired for Washer & Dryer
- Full-width Washer & Dryer Cabinets - w/ hanging space for drying
- Shut-off Valves at Plumbing Fixtures
- Built to CSA Z-240 Standard

10 YEAR



Pacific

HOME WARRANTY

 **The Sterling Series**
35' Wide Sectional Homes

The Bristol - ST-5440

35'-4" x 44' • 1,554 sq. ft.

2 Beds | 2 Baths | Den



 **The Sterling Series**
35' Wide Sectional Homes

The Coventry - ST-5441

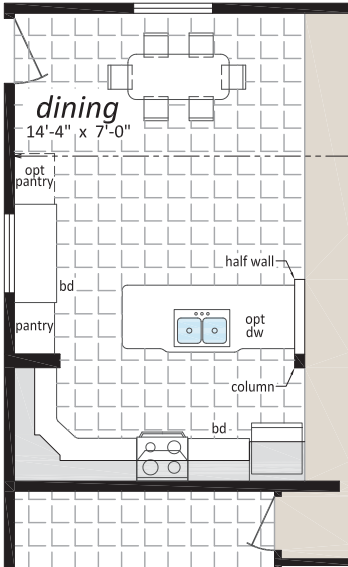
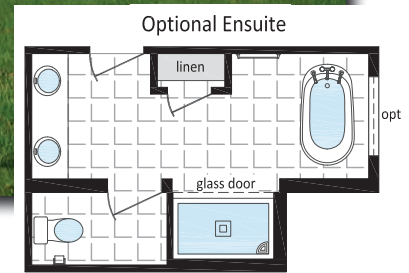
35'-4" x 44' • 1,554 sq. ft.
2 Beds | 2 Baths | Den



The Sterling Series
35' Wide Sectional Homes

The Doncaster - ST-5520

35'-4" x 52' • 1,837 sq. ft.
3 Beds | 2 Baths | Retreat

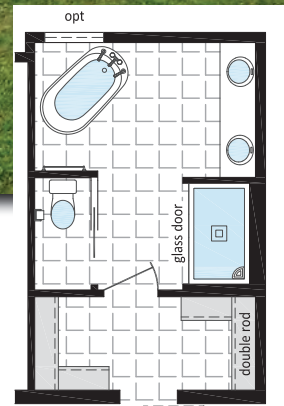


The Sterling Series
35' Wide Sectional Homes

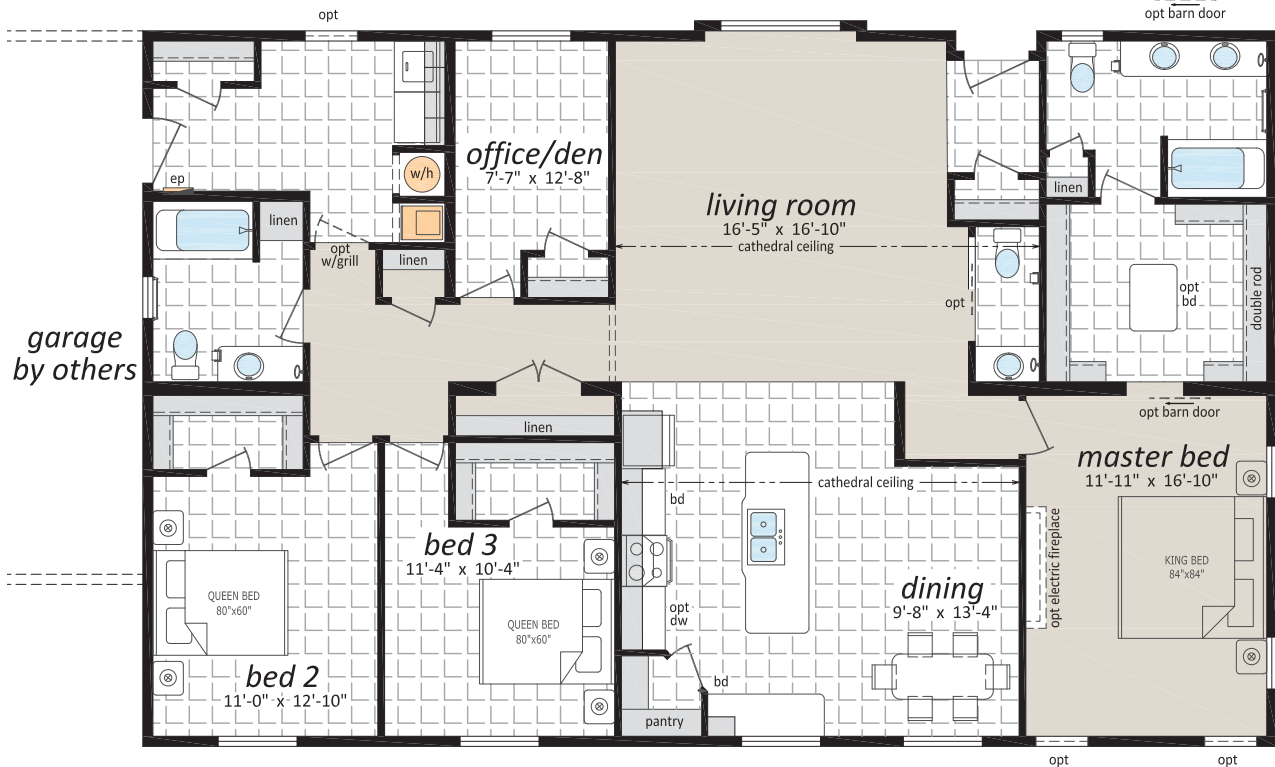
The Plymouth - ST-5560

35'-4" x 56' • 1,978 sq. ft.

3 Beds | 2 Baths | Den



Optional Ensuite



 **The Sterling Series**
35' Wide Sectional Homes

The Sheffield - ST-5561

35'-4" x 56' • 1,978 sq. ft.

3 Beds | 2.5 Baths | Porches



Rear Porch View



 **The Sterling Series**
35' Wide Sectional Homes

The Trafford - ST-5600

35'-4" x 60' • 2,120 sq. ft.

3 Beds | 2.5 Baths | Den | Covered Deck



Rear Deck View



 **The Sterling Series**
35' Wide Sectional Homes

Artist Rendering of "Trafford ST-5600" Dining/Living area.



Artist Rendering of "Trafford ST-5600" Dining/Kitchen area.



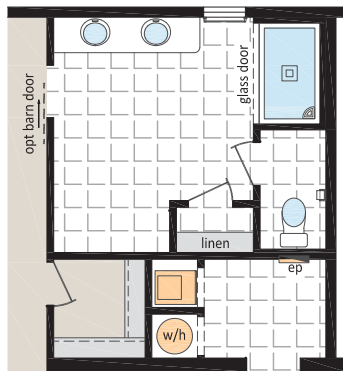
The Sterling Series

35' Wide Sectional Homes

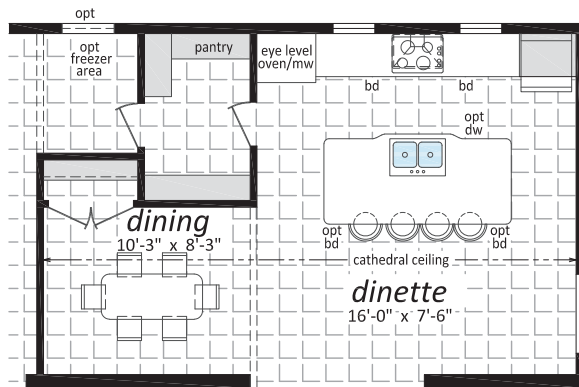
The Windsor - ST-5640

35'-4" x 64' • 2,261 sq. ft.

3 Beds | 2.5 Baths | Porches



Optional Ensuite



Optional Kitchen



Popular Optional Features

Exterior

- Hardie Siding
- Third Gables
- Shed Dormers
- Painted "Smart Start" Fascia, Window & Door Trim
- Painted Smart Start Shutters
- Garden or Patio Doors
- Exterior Door with Victoria, 9 Lite, Harlow or Niagara Insert
- "Ladder" Grids in Windows
- Transom Windows
- Bay Windows
- Skylights
- Octagon Vents
- Electric Door Chimes
- Extra Exterior GFI
- Faux Rock or Shake Accents
- Solar Tubes
- Black Exterior Options

Interior

- Upgrade Trim Package
- White Painted Trim Upgrade
- Painted Drywall with Ceiling Cove Moulding
- Conmore White Passage Doors
- Upgrade Lino
- Carpeting in 2nd and 3rd Bedrooms
- French Doors
- Utility Room Door with Grill
- Freezer Cabinets
- Laundry Cabinets
- Soak Sink with Cabinet
- Ceiling Fan with Lights
- 6" LED Down Lights
- Electric Fireplace with Faux Rock and Mantle
- Gas Fireplace with Fan and Mantle
- 9' Walls with Flat Ceiling Throughout
- Black Interior Options

Kitchen

- Solid Surface Countertops and Undermount Sinks
- Island Work Centre
- Wood Reveal Counter Edging
- Multi Row Tile Backsplash
- Pullout Trash and Recycle Bins
- Pantry Cabinets
- Additional Bank of Drawers
- Planning Centre
- Lazy Susan
- Black Sink
- Upgrade Moen Faucets
- Built-In Dishwasher
- Combination Microwave/Range Hood
- Stainless Steel Canopy Range Hood
- Eye Level Oven/Microwave with Cook Top
- Gas or Ceramic Top Self Cleaning Range
- Two Door Side by Side Refrigerator
(with water and ice maker) or Bottom Freezer
- Stainless Appliances

Bathroom

- Oval Tub or Corner Oval Tub
- Jetted Spa Option (*available on any tub*)
- 2 Person Jetted Tub
- 36", 48" or 60" Shower Stall
- Low Barrier Shower
- Grab Bars
- Assorted Medicine Cabinets

Utilities

- On Demand Water Heater
- 40 Gallon U.S. Gas Water Heater
- Baseboard Heating
- Forced Air Electric Furnace
- Heat Recovery Ventilation Unit
- Stacking Washer and Dryer
- Central Vacuum system
- Roughed in for Central Vacuum
- 200 Amp Service Panel
- Extra Telephone /Cable Box(es)
- Pre-wire for Telephone and/or Cable



Authorized Retailer: